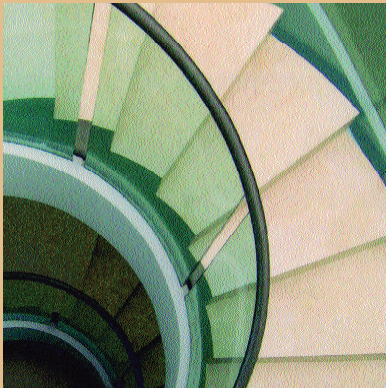
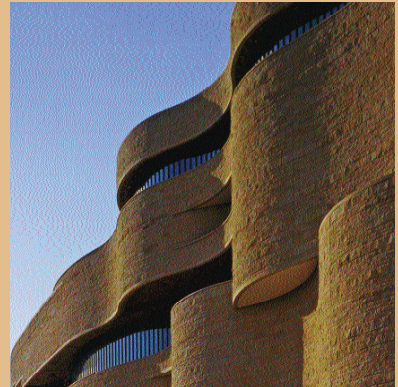
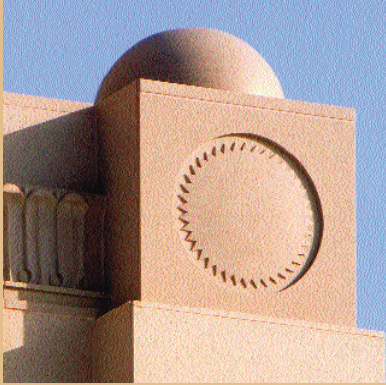
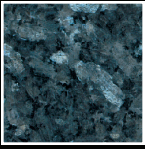


# 2005 Pinnacle Awards

*Celebrating Excellence in Natural Stone Design and Installation*



MARBLE  
INSTITUTE  
*of America*



## 2005 Pinnacle Awards

Each year, the Marble Institute of America (MIA) bestows its highly coveted Pinnacle Awards upon outstanding projects whose beauty, creativity, ingenuity, and craftsmanship exemplify professional mastery in the use of natural stone in commercial and residential settings.

This year's competition attracted a near record number of entries from MIA members worldwide. Entries were judged by a panel of experts representing the natural stone, architecture, and design professions.

### **Eligibility:**

Project teams had to include at least one MIA member company. Projects had to be completed within the past three years (January 2002-August 2005).

### **Criteria:**

Independent judges appointed by the MIA Board of Directors evaluated entries based on excellence in design and implementation, quality workmanship, and suitability of materials.

### **2005 Judges:**

#### **Wey Lee**

Senior Associate  
Ted Moudis Associates  
New York

#### **Richard Zurita**

Ricardo Zurita  
Architecture and Planning PC  
New York

#### **Chuck Muehlbauer**

Technical Director  
Marble Institute of America

#### **Paul Vigna, *President***

Stone Division  
Artisan Tile and  
Marble Company  
of New Jersey, Inc.



# 2005 Winners

## **Residential Interior/Exterior**

### *Award of Excellence*

Design MGM

### *Award of Merit*

Granicor

## **Commercial Exterior**

### *Award of Excellence*

Bestview International

Campolonghi Italia, S.R.L.

KEPCO+

Rock of Ages Corp.

### *Award of Merit*

Vetter Stone Company

## **Commercial Interior**

### *Award of Excellence*

D.M.I. Tile and Marble, Inc.

Tennessee Marble Company

### *Award of Merit*

Intertile Distributors, Inc.

## **Renovation/Restoration**

### *Award of Excellence*

A. Lacroix and Sons Granit LTD

Continental Marble Inc.

KEPCO+

## **Special Pinnacle Award - Stone Memorial**

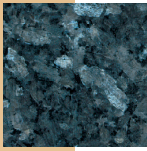
Cold Spring Granite Company

---

*MIA extends its congratulations to the winners, to all those who entered this year's Pinnacle Awards competition, and to all MIA members who continue to demonstrate excellence in natural stone design, materials, and craftsmanship in every project they undertake.*







# Residential Interior/Exterior

## Award of Excellence

### Project Name:

Private Residence, La Jolla, CA

### MIA Member Company:

Design MGM, Banning, CA  
Stone Fabricator and Installer

Engineering and fabricating this three-story spiral staircase made from Impero Travertine from Gaucci Quarries of Tivoli, Italy was very challenging. A total of 69 steps were required to complete the staircase. The client wanted to showcase the stairs with a light airy elegance by putting in the glass surround. The radius glass surround required there be no more than 3/16th tolerance allowed throughout the three stories. Impero Travertine was also used for the walls, vanity, shower, shower bench, and flooring. The entire residence used approximately 40,000 square feet of Travertine.

### Other Project Team Members:

**Batter Kay Associates:** Architect/Designer

**Lyons Construction:** General Contractor

**Walker Zanger:** Stone Supplier

### Judges' Comments:

*"Well balanced. Excellent engineering feat. Impressive minimalism and design. Simple yet elegant, extremely challenging design and workmanship."*





# Residential Interior/Exterior

## Award of Merit

### Project Name:

**Falling Spring House**, Alleghany County, VA

### MIA Member Company:

**Granicor**, St. Augustin, Quebec, Canada  
Stone Quarrier and Fabricator

Natural stone was a logical choice for this magnificent 5,000 square foot granite-clad home, since it complemented the beautiful, lush, mountainous environment. In addition, stone would fulfill the client's goal that the home rival its gorgeous surroundings, an "elegant jewel" tucked within the woodland. What initially began as a small fishing cabin became a majestic multi-million dollar estate gloriously nestled within the tranquility of the mountains.

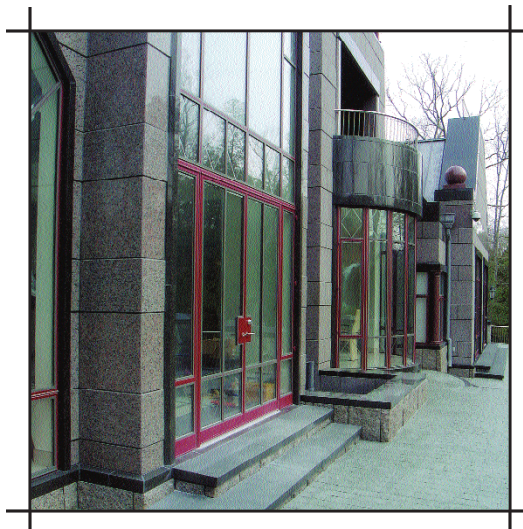
### Other Project Team Members:

**Scott McQuide, AIA and Brockwell Associates:** Architect

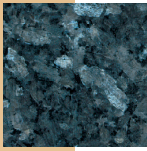
**Hock Development:** Contractor/Owner

### Judges' Comments:

*"Composition and choice of material is excellent and blends with the background of the site. Bold rugged stone profiles complement the rugged terrain of the site. Strong color contrast accentuates the prominent lines of the building."*







# Commercial Exterior

## Award of Excellence

### Project Name:

**Newport Beach Temple**, Newport Beach, CA

### MIA Member Companies:

**Bestview International**, Wood Dale, IL: Fabricator

**Campolonghi Italia, S.R.L.**, Massa, Italy: Fabricator

**KEPCO+**, Salt Lake City, UT: Stone Installer

**Rock of Ages Corp.**, Barre, VT: Stone Supplier

More than 31,000 square feet of stonework was used in the magnificent Newport Beach Temple in Newport Beach, California. One of the most time-consuming fabrication elements in the project was the leaf-shaped frieze which makes up the parapet of the temple. It is also adorned with sun-spined medallions which accent the frieze at the corners of the building. The sun detail was sandblasted while the honed finish was completed by hand. Other hand-carved details include the arched wind surrounds, the entrance arches and the half spheres which were the heaviest pieces fabricated for the project.

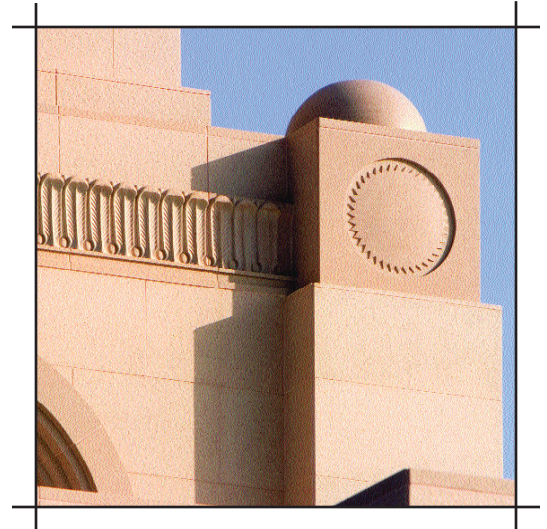
### Other Project Team Members:

**Lloyd E. Platt and Associates:** Architect

**Jacobsen Construction:** General Contractor

### Judges' Comments:

*"Stone at its best. Delicate sculpture work complements clean lines of temple design. Combination of all trades coming together."*





# Commercial Exterior

## Award of Merit

### Project Name:

**National Museum of the American Indian**  
Washington, D.C.

### MIA Member Company:

**Vetter Stone Company,**  
Kasota, MN: Stone Supplier and Fabricator

Located on a 4.25-acre site the 250,000 square foot, five story building is a series of continuous but non-repetitive curves, both concave and convex, along with ramp and twisted cut stone. No straight walls exist on the exterior and few on the interior. One hundred ninety truck loads of stone were used for the \$219 million project, which honors the past and present culture and history of Native Americans of the Western Hemisphere. The 65 foot high winding cantilevered exterior shelters the entrance and emulates Native American cliff dwelling sites. Its boldness is characterized by large natural strata panels weighing up to five tons.

### Other Project Team Members:

**Douglas Cardinal, LTD., BGQC, JohnPaul Jones, Ramona Sakiestewa, Donna House:** Design Concept

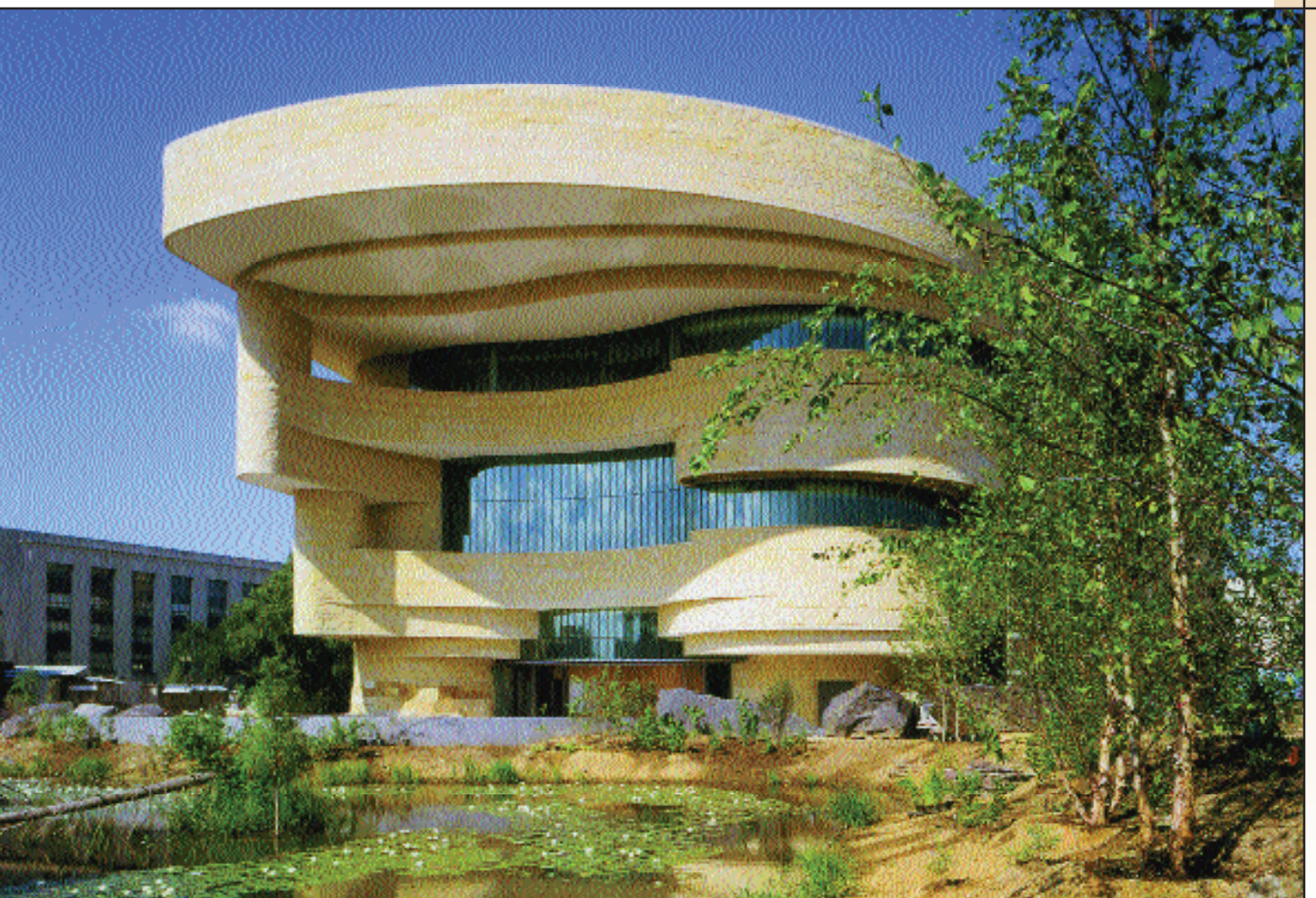
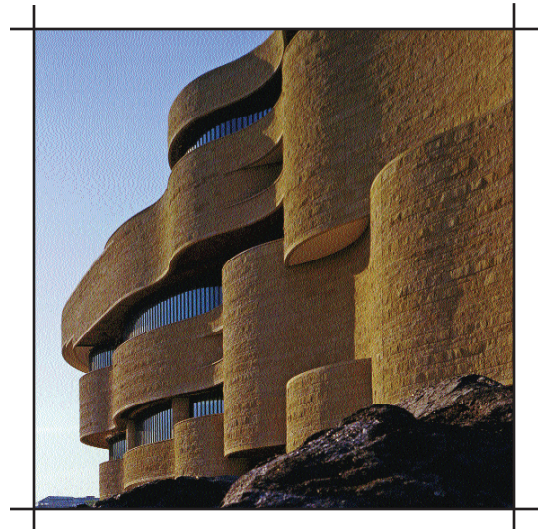
**Jones & Jones, SmithGroup, Lou Weller, The Native American Design Collaborative, Polshek Partnership Architects:** Architects

**The Clark Construction Group:** General Contractor

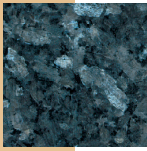
**G-A Masonry:** Stone Installer

### Judges' Comments:

*"Great use of stone. The absence of straight lines provides a very natural feel and is appropriate for this intent. Character of the building blends well and is free flowing."*







# Commercial Interior

## Award of Excellence

### Project Name:

**Alabama Department of Archives and History Building,  
West Wing Addition**

Montgomery, AL

### MIA Member Companies:

**D.M.I. Tile and Marble, Inc.**, Birmingham, AL  
Stone Fabricator and Installer

**Tennessee Marble Company**, Friendsville, TN  
Stone Supplier and Fabricator

The centerpiece of the design, is a 34' by 26' ellipse in a 340 piece pattern of Tennessee Roe marble. The pattern is composed of five ellipse accents, six diamond accents and four triangle accents and connecting wedges and triangles. Each section is surrounded with concentric and elliptical bands, with two additional bands at the outermost edge. The main hallway from the lobby is composed of the same material in a running bond pattern with a smaller circular area at the hall transition.

### Other Project Team Members:

**Seay Seay & Litchfield, P.C.:** Architects

**Jesco, Inc.:** General Contractor

### Judges' Comments:

*"Use of regional materials and recycled materials promotes green interest. Stunning with masterful execution of layout, design, and workmanship."*





# Commercial Interior

## Award of Merit

### Project Name:

**Sensi Restaurant, Bellagio Hotel, Las Vegas, NV**

### MIA Member Company:

**Intertile Distributors, Inc., Oakland, CA: Stone Supplier**

As you walk toward the Sensi Restaurant in the Bellagio Hotel, the first thing you notice is the casual elegant atmosphere created by natural granite walls, the infinity waterfall down the face of the Absolute Black granite bar and the soft flamed granite flooring. Some of the boulders used in the project are over one foot thick, so that floors needed to be reinforced to handle the extra weight of up to 4000 pounds and holes were cut into the ceiling in order for a crane to hoist the boulders into the restaurant. The soothing overall design of the restaurant was created by using more than 7000 square feet of flooring in both polished and flamed Navy Mist granite from China.

### Other Project Team Members:

**Super Potato:** Designer

**Marnell Corrao Associates:** General Contractor

**Marnell Corrao Associates:** Stone Supplier

**Superior Tile and Marble, Inc. and Izumiya Sekizaiten, Co. Ltd.:**  
Stone Fabricators

**Superior Tile and Marble, Inc.:** Stone Installer

### Judges' Comments:

*"Powerful, bold personality of stone is evident through the massive boulder profiles. Craftsmanship in the fitting of the monolithic pieces is unusually high. Harmony – use of stone in relationship to other materials."*







# Renovation/Restoration

## Award of Excellence

### Project Name:

**90 West Building**, New York, NY

### MIA Member Companies:

**A. Lacroix and Sons Granit LTD**,  
Saint-Sebastiaen, Quebec, Canada  
Stone Fabricator

**Continental Marble Inc.**, Holbrook, NY  
Stone Contractor

**KEPCO+**, Salt Lake City, UT  
Panel Fabricator

The major challenge in this project was fabricating recently quarried stone to blend with intricately carved granite weathered and aged for nearly 100 years, but it was done to perfection. The 90 West Building, across from where the World Trade Center once stood, was badly damaged during the 9/11 disaster. The stunning granite interior was devastated, thereby requiring massive façade restoration. Since the original material used in the building was not available, Englishman Bay granite was selected as the stone for new pieces. A total of 3000 square feet of stone was restored or fabricated for this project. Pieces on the project weighed from 1.5 pounds for the small marble inlays to column capitals at 1800 pounds.

### Other Project Team Members:

**Façade Maintenance Design:** Architect

**Seaboard Weatherproofing:** General Contractor

**CSCE Services Corp.:** Stone Consultant

**Conventional Stone and Marble (MIA Member):** Stone Installer

**Fletcher Granite Company (MIA Member):** Stone Quarry

### Judges' Comments:

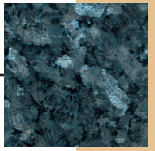
*"A brilliant blend of matching existing materials with the economies of modern setting techniques. As if it was originally built."*





# Special Pinnacle Award

## Stone Memorial



### Project Name:

**USS San Diego Memorial**, San Diego, CA

### MIA Member Company:

**Cold Spring Granite Company**, Cold Spring, MN

The artists' original design intent was to create an uplifting, stimulating public monument of the USS San Diego, which traveled 300,000 nautical miles and earned 18 battle stars during 37 months of World War II. The goal was a memorial to enlighten the nation to a compelling story of human struggle and sacrifice. The elements of the memorial sculpture include five large rectangular panels, four of stone and one of composition terra cotta, which are organized around a central, vertical granite parallelogram. As seen from the front, the composition is a harmonious V-shape. The monuments highly personal interior space, lists the names of the 1800 crew members, and overwhelms the view. It also features a 22-foot panel showing the ship in action.

### Other Project Team Members:

**Louis Thiele Quaintance and Eugene Lewis Daub:** Sculptors/Designers

**Jack Stevenson:** Coordinating Architect

**KTU & A:** Landscape Architect

**Melhorn Construction:** General Contractor

**Florentine Company:** Installer

### Judges' Comments:

*"When only stone will do. Gem-like!  
A memorial to be proud of."*





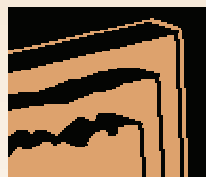
## About the Marble Institute of America

The Marble Institute of America (MIA), founded 61 years ago, is the premier resource for information and education for the natural stone industry. Currently, there are more than 1300 MIA members around the world, including marble, granite, limestone, sandstone and other natural stone producers and quarries, fabricators, installers, distributors and contractors.

The association's mission is to promote the use of natural stone and be the authoritative source of information on standards of workmanship and practice and suitable application of stone products. It publishes a monthly newsletter, called "The Cutting Edge," markets a range of technical publications, training and consumer DVDs, CDs and consumer pamphlets on natural stone and its application. MIA also sponsors business and technical meetings and seminars on industry-related topics and provides educational programming for architects and construction specification professionals.

---

For membership information, contact MIA at **440-250-9222**, email **miainfo@marble-institute.com** or visit the web site at **www.marble-institute.com**.



**MARBLE**  
**INSTITUTE**  
*of America*

### **Marble Institute of America**

28901 Clemens Road • Suite 100  
Cleveland, OH 44145

Phone: 440.250.9222 • Fax: 440.250.9223

[www.marble-institute.com](http://www.marble-institute.com)  
[miainfo@marble-institute.com](mailto:miainfo@marble-institute.com)