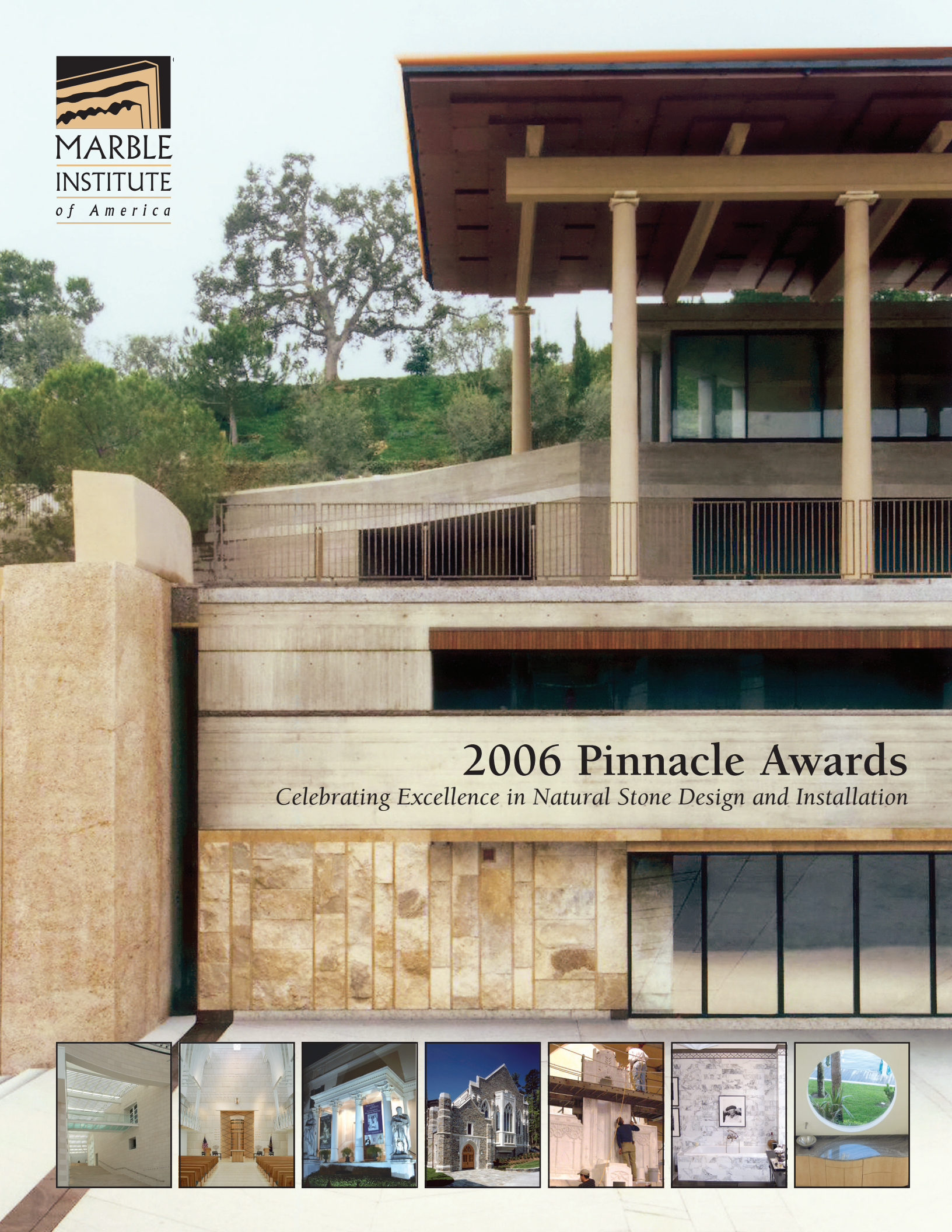


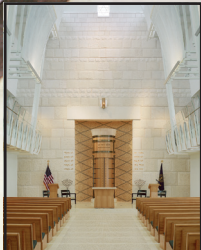


MARBLE
INSTITUTE
of America



2006 Pinnacle Awards

Celebrating Excellence in Natural Stone Design and Installation



Excellence in Natural Stone

Highly coveted, these awards are given to projects whose beauty, creativity, ingenuity and craftsmanship exemplify professional mastery in the use of natural stone in commercial and residential settings.

Eligibility

The Pinnacle Awards are open to all MIA member companies. Project teams must include at least one MIA member company. Projects submitted must comply with MIA standards as defined in MIA's *Dimension Stone Design Manual*.

Criteria

An independent panel of judges appointed by the MIA Board of Directors evaluated entries based on excellence in design and implementation, quality, workmanship and suitability of materials.

Judges

Mark D. Rohde, AIA

Rohde May Keller McNamara Architecture, P.C., Albuquerque, New Mexico

Mark D. Rohde is a founding principal of Rohde May Keller McNamara Architecture (RMKM) and has specialized in the design and planning of award winning, high-profile public architecture for over a quarter of a century. Known for his "hands on" approach to programming and planning, Rohde has focused on museums, libraries, educational facilities and health care buildings. A graduate of the University of New Mexico, with a Master of Architecture from Harvard University Graduate School of Design, Rohde currently is in the design development stage for a new 200,000 square foot cancer treatment center for the University of New Mexico.

Jon Anderson, Architect

Albuquerque, New Mexico

Since opening his own design studio in 1991, Jon Anderson has received 18 local and regional awards from the American Institute of Architects and his work has been featured internationally in books and periodicals. A graduate of the University of New Mexico, Anderson has 33 years of diverse local and national architectural experience, including 12 years with Antoine Predock Architect. Anderson recently completed the new MINI Cooper Dealership in Albuquerque and is currently working on the new University of New Mexico School of Architecture and Planning in association with Antoine Predock Architect. He lives in the Historic Downtown Neighborhood of Albuquerque.

Scott Lardner, President

Rocky Mountain Stone Company, Albuquerque, New Mexico

CEO of one of the country's most successful regional natural stone companies, Scott Lardner is immediate past president of the Marble Institute of America. In a career that started in 1983, the New Mexico State University graduate has worked in every aspect of the industry, including fabricator, sawyer, installer, sales, marketing and administration. Rocky Mountain Stone and its sister company, New Mexico Travertine of Belen, New Mexico, are owned by five Lardner brothers. In both businesses, they have been involved in many outstanding projects both in New Mexico and across the United States, including renovation of the New Mexico State Capitol building and the Las Vegas Federal Courthouse.

Chuck Muehlbauer, Technical Director

Marble Institute of America

Previously the technical advisor to the Building Products Division at Cold Spring Granite Company, Muehlbauer is an expert in the quarrying, fabrication, anchorage, installation and maintenance of natural stone products. He has written and edited several papers published by the

American Society of Civil Engineers and ASTM. As technical director of the Marble Institute of America, he is involved in creating technical bulletins and counseling with individual members on various aspects of the business.



Commercial Interior | Award of Excellence

Telfair Museum's Jepson Center for the Arts • Savannah, Georgia

Dan J. Sheehan Company, Inc. • Savannah, Georgia

Stone Fabricator and Installer



Commercial Interior | Award of Merit

Commodore Uriah P. Levy Center, U.S. Naval Academy • Annapolis, Maryland

Rugo Stone, LLC • Lorton, Virginia

Stone Installer



Commercial Exterior | Award of Excellence

The Getty Villa • Malibu, California

Carnevale & Lohr • Bell Gardens, California: Stone Installer

David Carnevale: Project Manager

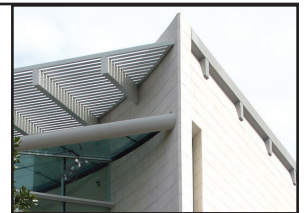


Commercial Exterior | Award of Merit

Telfair Museum's Jepson Center for the Arts • Savannah, Georgia

Dan J. Sheehan Company, Inc. • Savannah, Georgia

Stone Fabricator and Installer



Commercial Exterior | Award of Merit

Divinity School Addition, Duke University • Durham, North Carolina

Rugo Stone, LLC • Lorton, Virginia

Stone Supplier and Installer



Restoration | Award of Excellence

Our Lady of Hope Catholic Church • Potomac Falls, Virginia

Rugo Stone, LLC • Lorton, Virginia

Stone Fabricator and Stone Installer



Residential Kitchen and Bath | Award of Merit

Kips Bay Show House • New York, New York

Walker Zanger • Sylmar, California

General Contractor and Stone Supplier



Residential Kitchen and Bath | Award of Merit

Grossman Residence • Boca Raton, Florida

Millennium Marble and Tile • Pembroke, Florida

Stone Installer



Judges Comments:

“Impressive scale for an interior space. Beautiful monolithic limestone. Excellent design – detailing execution. Very clean, open, airy design.”



Project Name:

Telfair Museum's Jepson Center for the Arts
Savannah, Georgia

MIA Member Company:

Dan J. Sheehan Company, Inc.
Savannah, Georgia
Stone Fabricator and Installer

Project Description:

The Telfair Museum's Jepson Center for the Arts in Savannah brings a contemporary influence gracefully into the “oldest art museum in the south.” The Telfair's addition of a 64,000 square foot modern stone structure was designed by Moshe Safdie and Associates of Somerville, Massachusetts to complement its original (circa 1819) stone mansion and surrounding 18th and 19th century buildings. It was a remarkable achievement. Safdie and Associates blended modern geometry with the color pallet of Savannah by using the same Golden Beach Limestone to flow through both interior and exterior.

Other Project Team Members:

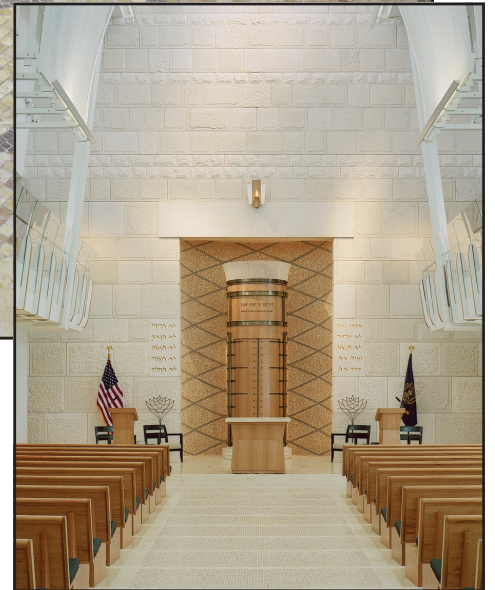
Hansen Architects
Architect of Record

Jeffrey Matthews, Trade International (MIA Member)
Stone Consultant

Rives E. Worrell Company
General Contractor

Henraux S.p.A.
Stone Supplier and Fabricator

Moshe Safdie and Associates
Design Architect



Judges Comments:

“Brilliant use of multiple finishes in the Jerusalem stone. Traditional feel rendered in contemporary materials. Nicely detailed and executed. This space looks sacred. Excellent palate of stone, wood, glass and steel. Beautiful stone textures.”

Project Name:

**Commodore Uriah P. Levy Center,
U.S. Naval Academy**
Annapolis, Maryland

MIA Member Company:

Rugo Stone, LLC
Lorton, Virginia
Stone Installer

Project Description:

The Levy Center is a new Jewish Chapel located at the U.S. Naval Academy. The architects were commissioned to design a small but heavily detailed religious space that provides a direct link to the Hebrew homeland of Israel. There was little hesitation by the designers in determining that the most appropriate material for the link was natural stone, and specifically that of which most of Israel is built, Jerusalem Stone. To strongly emphasize the link to Jerusalem, the design team provided as the primary focus of the project a 1500 square foot scaled down replica of the Western (Wailing) Wall.

Other Project Team Members:

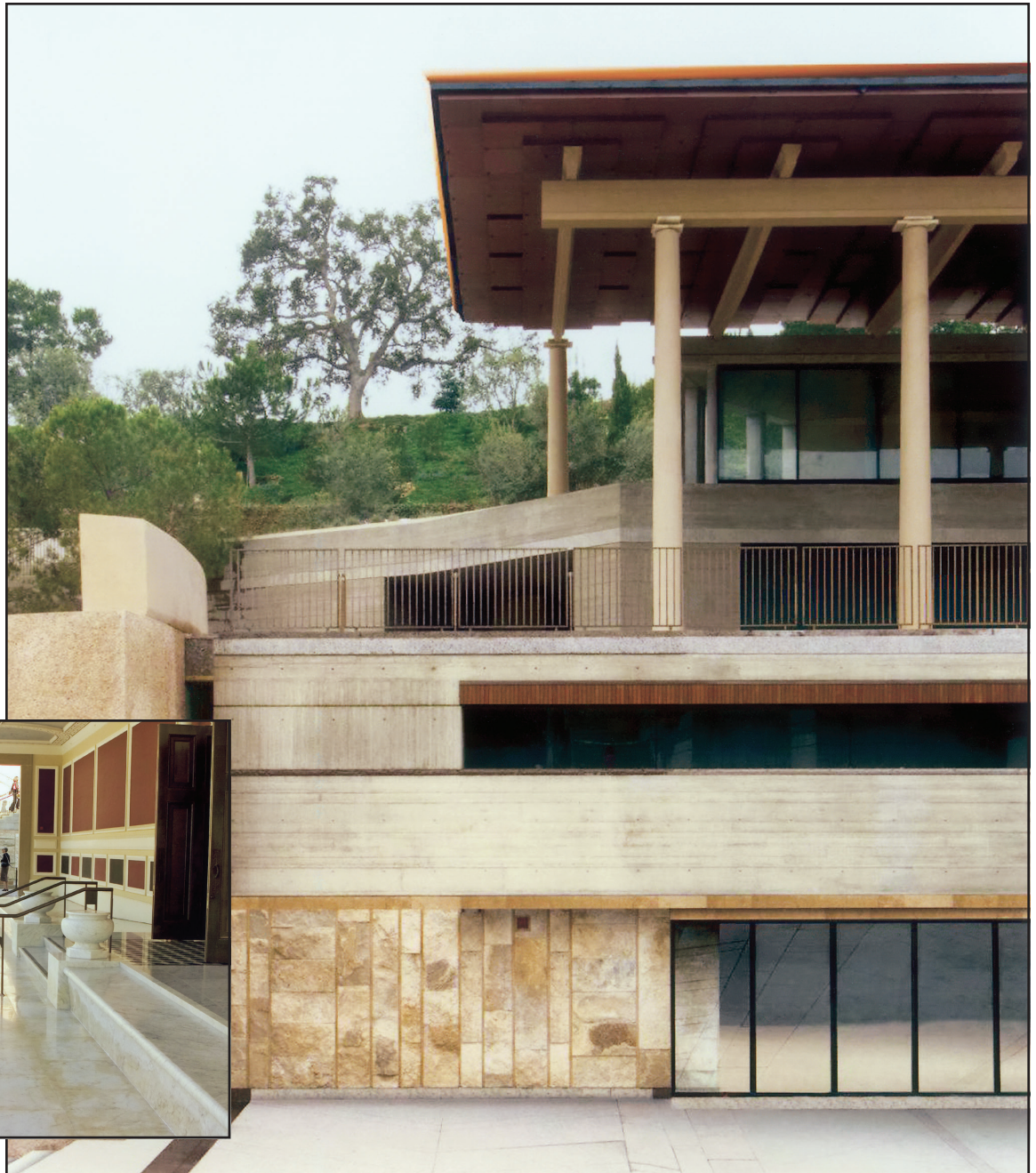
Boggs and Partners
Architects

Whiting-Turner
Contractor

Jerusalem Gardens
Stone Supplier

Judges Comments:

“Clearly a masterpiece of stone usage. Unique design elements impeccably conceived. Unexpected patterns and rich combination of a variety of stonework. Contemporary yet timeless. The epitome of creative stonework.”



Project Name:

The Getty Villa
Malibu, California

MIA Member Company:

Carnevale & Lohr
Bell Gardens, California
Stone Installer
David Carnevale
Project Manager

Project Description:

The Getty Villa renovation in Malibu was completed in January, 2006. It was a complex project which included two distinct subprojects. The first being the complete renovation of the Getty Museum built in 1972, and the second being new construction of additional buildings directly adjacent to and surrounding the original museum. Stones used in this project came from Italy, Spain, Turkey, China, Greece and the United States. They were specifically selected by the architect for their color and ability to support the design intent of the villa itself. Many trips were made overseas to the quarries to select exact blocks and oversee production of finished materials. In all, about 35 containers of stone were brought in for the project.

Other Project Team Members:

Machado & Silveti Associates
Architects
Morley Construction Company
General Contractor
Jeffrey Matthews, Trade International
(MIA Member)
Stone Sourcing Consultant



Judges Comments:

“Clean, sophisticated and very elegant. Great use of stone and glass. Impressive scope of stone cladding. Beautifully monolithic limestone, continuity from exterior to interior that can only be accomplished with stone.”

Project Name:

Telfair Museum’s Jepson Center for the Arts
Savannah, Georgia

MIA Member Company:

Dan J. Sheehan Company, Inc.
Savannah, Georgia
Stone Fabricator and Installer

Project Description:

The Award of Merit for Commercial Exterior presented to Telfair Museum’s Jepson Center for the Arts was a second for the project, (it also earned an Award of Excellence for the Commercial Interior). The concave, convex and conical stone walls flow continuously between interior and exterior and elegantly protrude through glass ceilings, blurring the line between interior and exterior and opening the museum to natural light makes the structures accessibility astounding. The Telfair Museum’s guests can view the historic city from nearly every angle. The magnificent three-level stone grand staircase is the most visible feature from the outside and truly opens the center to Savannah’s most stunning views.

Other Project Team Members:

Moshe Safdie & Associates
Design Architect

Hansen Architects
Architect of Record

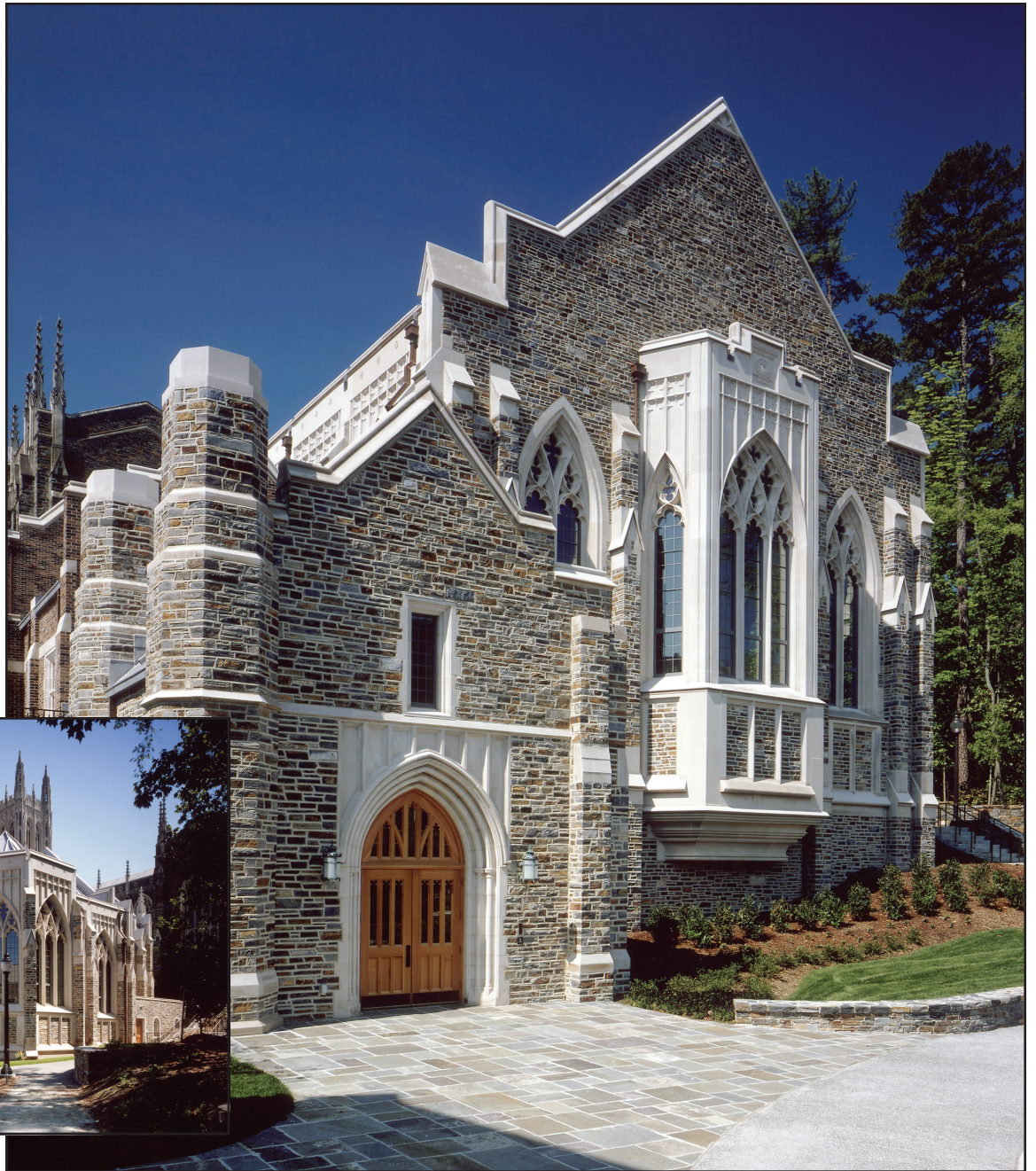
Rives E. Worrell Company
General Contractor

Henraux S.p.A.
Stone Supplier and Fabricator

Jeffrey Matthews, Trade International (MIA Member)
Stone Consultant

Judges Comments:

“The best in historicism. It takes courage to attempt replication of existing architecture of this nature. The goal was tastefully achieved in this instance. Beautifully recreates yesteryear building technology. Very impressive historical replication. Unsurpassed craftsmanship.”



Project Name:

Divinity School Addition
Duke University
Durham, North Carolina

MIA Member Company:

Rugo Stone, LLC
Lorton, Virginia
Stone Supplier and Installer

Project Description:

The Duke Divinity School Addition reflects an age of skilled stone carvers of native materials, just like the buildings to which it is so sensitive in architectural design. Located between the lower court adjacent to the 1926 Duke Chapel and the 1970 “new Divinity Wing,” the 45,400 square feet addition seamlessly completes the cloister that is formed by the Duke Chapel and the open loggia that links it to the original divinity building. The Chapel is Collegiate Gothic in style and largely constructed of Duke Stone ashlar cladding with heavily articulated Indiana Limestone exterior trim elements. The twelve delicate arches, decorative bands, carved wall copings and the twelve historically accurate ornamental finials were created by master carvers in the same Rustic Buff Indiana Limestone as the original buildings.

Other Project Team Members:

Hartman-Cox Architects
Architect
Skanska, USA
General Contractor
Bybee Stone Company
Indiana Limestone Supplier and Fabricator
Duke University
Stone Supplier for Duke Stone
Prostone S.R.L.
Pietra Serena Interior Flooring



Judges Comments:

“Impressive old-world craftsmanship with attention to historic continuity. Outstanding attention to detail. Well crafted, thoughtful execution. Professionally done. Technically good.”

Project Name:

Our Lady of Hope Catholic Church
Potomac Falls, Virginia

MIA Member Company:

Rugo Stone, LLC
Lorton, Virginia
Stone Fabricator and Stone Installer

Project Description:

In submitting this entry, Brett Rugo of Rugo Stone called it “a project that makes you feel like this is what being a natural stone contractor is all about. It is a labor of love with appreciation for the craftsmen of the past and present.” Our Lady of Hope Catholic Church is a new Catholic Church, but contains several statues, a very old and ornate altar and other artifacts collected from sanctuaries from as far away as Philadelphia and San Francisco. The task at Rugo Stone was to inspect loosely crated pieces of stone and statues, many of which were covered with 80 years of grime, and then restore them, recarve various pieces, without the benefit of scale drawings, and only a few photographs.

Other Project Team Members:

Kerns Group Architects
Architect

Scott Long Contracting
General Contractor

Prostone S.R.L.
Stone Supplier and Stone Fabricator



Judges Comments:

“Well executed, nice relationship of curved cabinetry, countertops and natural swirl pattern of stone. Technically challenging design. Good execution. Subtle simple exercise in scale and proportion, Clean design. Interesting use of curves.”

Project Name:

Grossman Residence
Boca Raton, Florida

MIA Member Company:

Millennium Marble and Tile
Pembroke, Florida
Stone Installer

Project Description:

The challenges in developing this beautiful kitchen were two-fold. The owners selected curved cabinets and five slabs of Juparana Mahogany from USA Granite which featured a wavy pattern. After the job was templated, the major issue was incorporating the motion of the granite with the motion of the curved cabinets so there was a dual feeling of movement. Millennium Marble and Tile also installed stone floors throughout the house.

Other Project Team Member:

USA Granite
Stone Supplier



Judges Comments:

“Unusual application of marble pattern. Nice use of material. Different and unusual module. Very clean blend of monochromatic elements in Calacata marble. Great use of ‘classic’ marble.”

Project Name:

Kips Bay Show House
New York, New York

MIA Member Company:

Walker Zanger
Sylmar, California
General Contractor and Stone Supplier

Project Description:

The Kips Bay Show House is a major fundraiser for the Kips Bay Boys and Girls Club. The house highlights the best the nation has to offer in interior design. Many challenges had to be overcome in order to make the show house a success. From the delivery of supplies to the official grand opening, Walker Zanger had three weeks to make the bathroom completely functional and presentable. All the materials used in the bathroom design had to be fabricated onsite to fit the bathroom. Walker Zanger was the corporate sponsor for the project, supplied all of the stone, tile materials and vanity for the bathroom and was a strategic partner in implementing a seamless design between the master bedroom and bathroom.

Other Project Team Members:

Lido Stoneworks
Stone Fabricator and Installer
Larry Laslo Designs
General Contractor and Designer

About the Marble Institute of America

For over sixty years, the Marble Institute of America (MIA) has served as the authoritative source of information regarding standards of dimensional stone workmanship, practice and the suitable application of natural stone products.

Membership in the association is worldwide and includes natural stone producers, exporters/importers, distributors/wholesalers, fabricators, finishers, installers, and industry suppliers — all committed to the highest standards of workmanship and ethics.

MIA publishes a monthly newsletter for members, markets a range of technical publications and consumer pamphlets on natural stone, sponsors business and technical meetings and seminars on industry-related topics, promotes their member companies on the MIA web site, provides educational opportunities for architects and construction specification professionals, and conducts the “Rocky” Advertising Awards and the annual Pinnacle Awards competition recognizing outstanding natural stone projects worldwide.

MIA is also a leading proponent of stone usage in the commercial and residential marketplaces. MIA produces a number of consumer educational materials on the use of natural stone and its proper care and maintenance, and hosts an informative web site for consumers as well as design and construction professionals at www.marble-institute.com.

For membership information, contact MIA at **440-250-9222**, email **miainfo@marble-institute.com** or visit the web site at **www.marble-institute.com**.



MARBLE
INSTITUTE
of America

Marble Institute of America

28901 Clemens Road • Suite 100
Cleveland, OH 44145

Phone: 440.250.9222 • Fax: 440.250.9223

www.marble-institute.com
miainfo@marble-institute.com