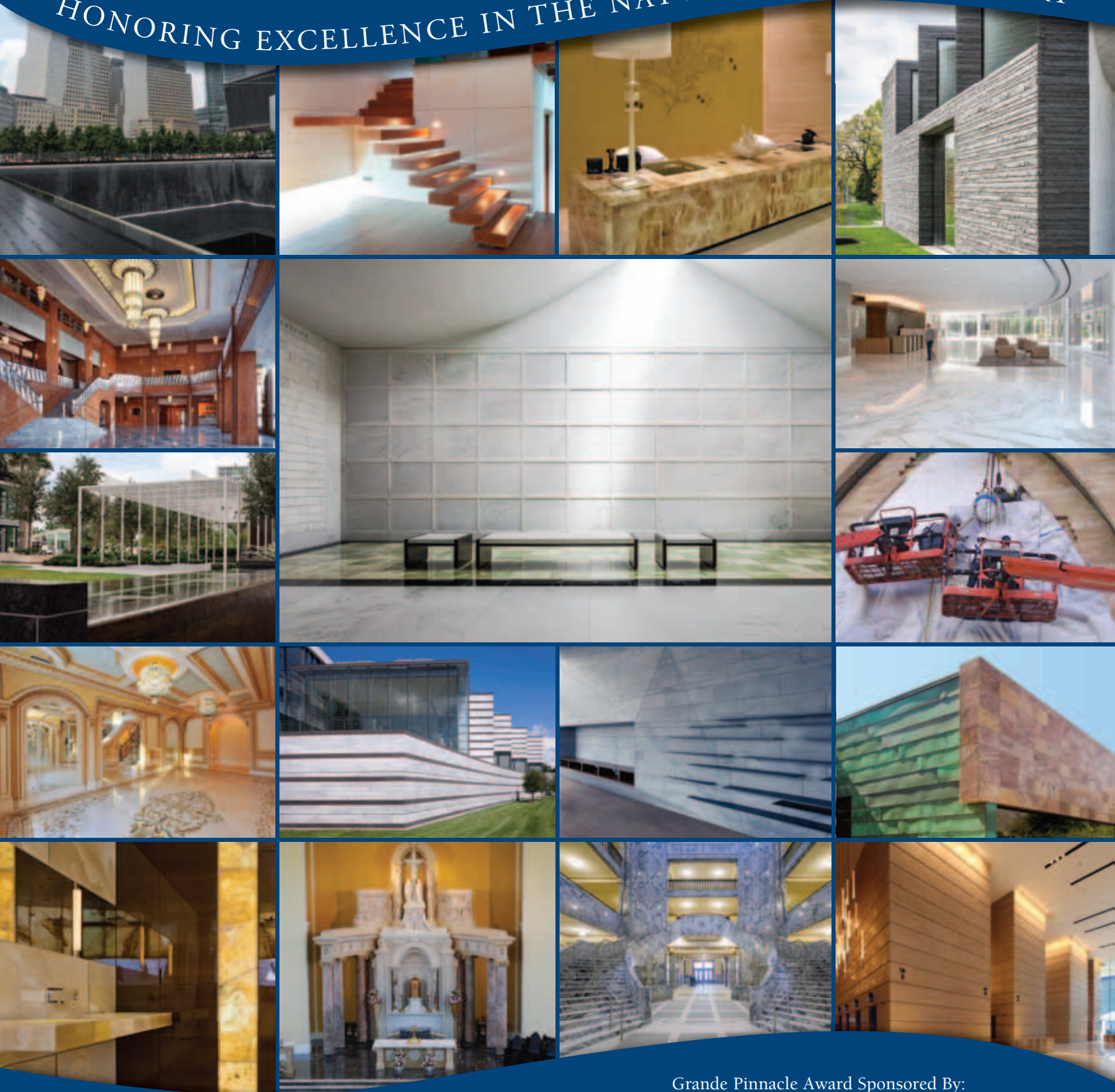




MARBLE
INSTITUTE
of America

2012 MIA Pinnacle Awards

HONORING EXCELLENCE IN THE NATURAL STONE INDUSTRY



Grande Pinnacle Award Sponsored By:

MARMOMACC

Letter from the President



Over the years, the Marble Institute of America's Annual Awards Luncheon has recognized excellence in a number of areas, including stone projects entered in the Pinnacle Awards competition, the Natural Stone Scholarship Award, the Craftsman of the Year Award and the Migliore Award for Lifetime Achievement. The MIA also presents the Grande Pinnacle Award which recognizes the best overall project among the Pinnacle Award winners. The awards luncheon is one of the highlights of the year for the MIA.

I am pleased that each year our signature Pinnacle Awards competition grows in stature around the world, especially with the addition of the Grande Pinnacle Award. In 2012, MIA received a near record number of entries and presented 17 awards of excellence and merit. Many of the entries were from the international community, further evidence of the award program's growing appeal on the world stage.

Because of the broad reach of the internet and the ability to post segments of the awards presentation on the MIA website, recipients of the various awards receive a tremendous amount of publicity beyond what was possible only a handful of years ago.

In this brochure, you will find all the winners of the various competitions. It may also serve as a stimulus for you to enter the Pinnacle Awards competition next year.

I know you will join me in congratulating all of the winners and thanking our generous sponsors: Marmomacc for the Grande Pinnacle Award and Polycor and the Artisan Group for the MIA Natural Stone Craftsman of the Year Award.

Michael A. Twiss
2012 MIA President
Marble Institute of America

Award	Page
Grande Pinnacle Award	4-5
Pinnacle Awards of Excellence	6-11
Pinnacle Awards of Merit.....	12-15
Special Pinnacle Award of Merit for Craftsmanship.....	16
Special Pinnacle Award of Merit for Sustainability	16
MIA Natural Stone Scholarship Award.....	17
MIA Natural Stone Craftsman of the Year.....	18
Migliore Award for Lifetime Achievement	19

Pinnacle Awards

The Marble Institute of America's prestigious Pinnacle Awards honor stone companies around the world for projects that stand out above the rest.



Again this year, the award's sponsor, Marmomacc, will present a Grande Pinnacle Award to an architect from the firm involved with the winning project. In addition, that architect will win a trip to Marmomacc to attend Veronafiere's week-long continuing education program on designing with natural stone.

Also again this year, all Pinnacle Award of Excellence and Award of Merit winners now have the opportunity to invite an architect from the firm involved in their winning project to StonExpo 2013. With the generous support of Hanley Wood Exhibitions, these award-winning architects will receive 3 nights lodging in Las Vegas and will be invited to a VIP reception. Marmomacc will invite the winning

architects to take part in a full-day educational program held during StonExpo/Marmomacc Americas.

Judging the numerous entries was a challenging task. The final selection was for the coveted Grande Pinnacle Award, which honors the top overall project. This award is sponsored by Marmomacc, held in Verona, Italy.

Again this year, the MIA sought to identify and award a project that demonstrates environmental responsiveness and successful resolution of sustainability goals.

Thanks to our Grande Pinnacle Award sponsor:

MARMOMACC



2012 Pinnacle Awards Judges:

Christian R. Pongratz

Pongratz Perbellini Architects
VRoooMSTUDIO
Via d.a. tridentina 9
37057 s.g.l. Verona, Italy

Carter Quina, AIA

Quina Grundhoefer Architects
400 West Romana Street
Pensacola, FL 32502

Mac Walcott

Walcott Adams
Verneuille Architects
One South School Street
Fairhope, AL 36532

Gaspar (G.K.) Naquin

Immediate MIA
Past President
Stone Interiors
P.O. Box 693
Loxley, AL 36551



Grande Pinnacle Award

Migliore Award for Lifetime Achievement



The Migliore Award for Lifetime Achievement was established in 2003 to recognize an individual who has made extraordinary contributions to the natural stone industry and the Marble Institute of America. The award is named for MIA's long-time technical director, the late Vincent R. Migliore, who was the first recipient. The 2012 award winner was chosen by the MIA Board of Directors from nominations submitted by the MIA membership.

Natural Stone Craftsman of the Year



The Marble Institute of America established the MIA Natural Stone Craftsman of the Year Award in 2009, adding a new dimension to its recognition programs. While it has long presented awards to top stone projects in its highly publicized Pinnacle Awards competition, the new award is designed to recognize the skilled individuals who actually craft and install stone and train the young people who are the future of the natural stone industry. There is nothing more important than excellence in craftsmanship to get the most out of nature's finest and most beautiful building material. The 2012 award winner was chosen by a panel of six MIA past presidents.

Thanks to our sponsors:



POLYCOR

Natural Stone Scholarship Award



The MIA Natural Stone Scholarship Award was established by the Marble Institute of America to provide educational opportunities for aspiring fabricators, installers, or administrative apprentices interested in furthering their careers within the natural stone industry.

The scholarship covers travel and registration costs to StonExpo/Marmomacc Americas and the MIA Annual Meeting. Scholarship winners have the opportunity to gain valuable technical and practical knowledge, meet and network with leading stone professionals, and explore potential for future leadership.

Funds are made possible through the generous donations of MIA members worldwide.



MIA Member Company:

Grazzini Brothers & Company

Eagan, Minnesota

Stone Installer

Other Project Team Members:

Lakewood Cemetery

Client

HGA Architects

Architect/Designer

M.A. Mortenson Construction

General Contractor

Santucci Armando s.r.l.

(MIA Member Company)

Terrazzo & Marble Supply Co.

(MIA Member Company)

Cold Spring Granite

(MIA Member Company)

Stone Suppliers

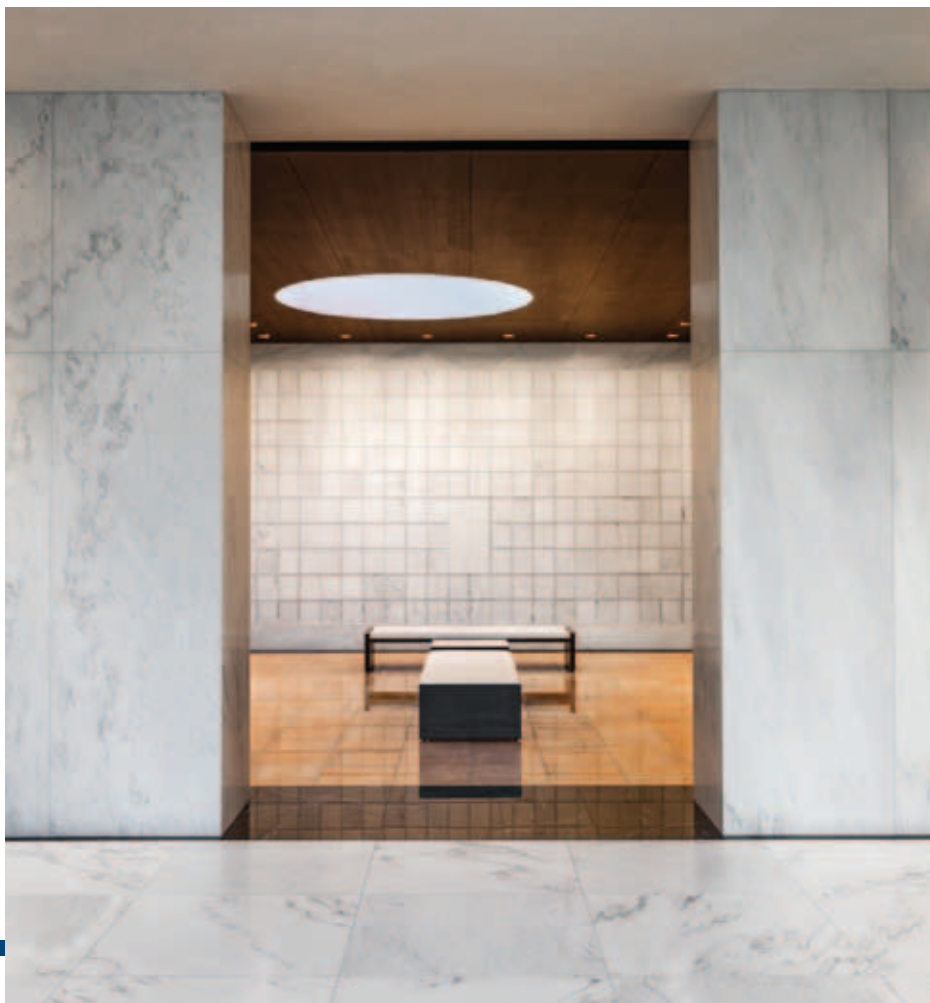
Santucci Armando s.r.l.

(MIA Member Company)

Stone Fabricator

Stone:

Green Onyx, Honey Onyx, Pink Onyx,
Alabama White, Nero Marquina



Judges Comments:

"A thoroughly integrated design that provides a restrained, respectful memorial environment."

"Fabulously designed ceiling gives flowing feel with stone white walls and earth-tone floor."

"Respectful – maintains the appropriate setting, well researched."



Lakewood Cemetery Garden Mausoleum Minneapolis, Minnesota

With the existing mausoleum nearing capacity, Lakewood developed a plan for a new 24,500 sq. ft. mausoleum that includes burial space for more than 10,000, a chapel, reception center and new landscaping on four acres.

Challenged with adding a large structure to a much-beloved place, a strategy was developed that protected and enhanced the cemetery's historic landscape. Two-thirds of the building is tucked into a hillside to minimize the massing at street level. A green roof planted over the lower level extends the cemetery's lawn while angled grass mounds articulate skylights for the building's subterranean spaces.

At the mausoleum's entry, an intricately patterned white mosaic rendered in infinite loops across white billowing surfaces reimagines the historic 1910 Lakewood Chapel's colorful mosaic interiors. The interior committal space is clad with Alabama White marble walls. Horizontal bands of split-faced gray granite tie the structure to the earth. Bronze doors usher visitors into a serene space of mahogany walls, marble floors and abundant daylight.

A generously-scaled stair draws visitors from the entry to the lower garden level. Stretching east, a single hallway strings together alternating bays of columbarium and crypt rooms. While geometrically similar, each chamber is distinguished by subtle "soft muted grey veining." Inset floors of luminous onyx alternate between honey yellow, jade green, coral pink and accents of Nero Marquina. Window and skylight orientations rotate and shift between rooms, variously framing views to near and distant horizons or up to the tree canopy and clear sky.

Throughout, the contrast of textures—light and dark, rough and smooth, rustic and refined—calls upon both visual and tactile senses to offer a peaceful place for contemplation and remembrance. At this cherished haven within the city, architectural progress meets history with grace and a newfound vitality.





Commercial Exterior | Award of Excellence



MIA Member Company:

Cold Spring Granite

Cold Spring, Minnesota

Stone Supplier

Stone Fabricator

Other Project Team Members:

Lakewood Cemetery Association

Client

HGA Architects

Architect

M.A. Mortenson Construction

CD Tile & Stone

Grazzini Brothers

(MIA Member Company)

Stone Installers

Stone:

Academy Black® Granite

Charcoal Black® Granite

Diamond Pink® Granite



Judges Comments:

“Beautifully designed openings in the façade direct the natural daylight in various ways into the interior spaces.”

“It is inspiring to see such a thoroughly integrated design.”

“Great design, quality and implementation of design.”



Lakewood Cemetery Garden Mausoleum Minneapolis, Minnesota

Lakewood's new garden mausoleum is a modern work of art with a contemporary design in a peaceful setting. Balancing stone and light, the rough-textured granite and mosaic marble mausoleum displays the relationship between the spiritual and the earth. The mausoleum, which opened in January 2012, was designed by Joan M. Soranno, FAIA, Design Principal, and John Cook, FAIA, Project Manager, from the Minneapolis office of HGA. Soranno chose a combination of Cold Spring Granite's Academy Black® and Charcoal Black® granites for the rough split face veneer. Using the two shades gives the building just the right hint of sparkle. Representing the imperfection of life, Soranno preferred a coarse exterior to the structure.

The granite was installed with extensive lippage, intentionally creating irregularities. Soranno explained that the sought-after effect produces complex shadows. Only one-third of the structure is above ground: the granite façade blending with the surrounding landscape. It was important to Soranno that the building design and materials worked intimately with nature, providing a final serenity.

The area is complemented by granite benches, a pool and paved walkways in Cold Spring Granite's subdued Diamond Pink® granite, invoking a sense of peaceful paths and quiet resting places leading to the mausoleum.



MIA Member Company:

Port Morris Tile & Marble
Bronx, New York
Stone Installer

Other Project Team Members:

A. Lacroix Granit, Canada
(MIA Member Company)
Stone Supplier

Michael Arad
Peter Walker
Architects

Stone:

Jet Mist Granite
Verde Fontaine

Judges Comments:

"A good choice of materials and the layout of the public plaza support the excellence of design idea of surface and void."

"Stone and water once again give life to one of our most important memorials."

"Speaks to permanence of the natural stone and the flow of life (water) and death."

National September 11 Memorial New York, New York

Building the National September 11 Memorial was one of international significance, especially since Port Morris had worked on the original Twin Towers. Port Morris installed both of the 200 ft. north and south fountains, which have honed Jet Mist Granite, from A. Lacroix Granit in Canada, installed on the interior walls. Each piece weighs approximately 300 pounds and there were 3,500 pieces (63,000 sq. ft.) of this granite used.

The flamed granite pavers and cobblestones, installed over the entire concourse, were also part of this project. Port Morris installed 115,000 sq. ft. of cut-to-size Verde Fontaine granite pavers and 65,000 sq. ft. of Verde Fontaine cobblestones throughout the plaza along with over one hundred benches and steps in the same material.

There were major milestones that needed to be hit in order to stay on track for the Memorial opening date 9/11/2012, the 10th anniversary of the attacks. Completing the walls on schedule was crucial to ensure all water tests, bronze plating and other items were also completed in time. Both fountains with running water were completed by the 10th anniversary, along with 90,000 sq. ft. of pavers and cobblestones on the plaza.



MIA Member Company:

Picasso Tile & Stonework

Tempe, Arizona

Fabricator & Installer

Other Project Team Members:

Wendell Burnette Architects

Architect

The Construction Zone

General Contractor

Puccio

Stone Supplier

Stone:

Onyx



Judges Comments:

"All the finishes in the bath zones are of exquisite materials and the thoughtful application of onyx and other natural stones make for an opulent but stylish interior."

"WOW! A theater of light, shadows and textures."

"Mysterious quality. Transparency in stone panels. 'Moving wall' yet permanent materials."



Desert Courtyard Scottsdale, Arizona

This private residence in Arizona has 22 exquisite slabs of onyx in the master bathroom. The overall goal of this project was to create a museum experience for the homeowners, yet have it remain comfortable and livable. The master bathroom contains an 18 ft. long x 10 ft. tall backlit shower wall that opens to a private outdoor space.

Walls within the 440 sq. ft. master bath were floated square and plumb, waterproofed and clad with the direct adhered method per the MIA installation standard for wet areas-stone slab residential showers. The onyx slabs were sized, templated for random colors, cut and fabricated with a 1/16" chamfer to create a jeweled edge. Hidden in these walls were backlit medicine cabinets, trash bins, and accent panels. Each panel was highlighted with a stainless muntz bar on all sides. The custom backlit trough sinks were fabricated to contain a slot drain and functioning drawers.

The entire master bath floor was treated as a wet area with a suspended shower floor. A secondary shower floor underneath, pitched water to the drain system below.



MIA Member Company:

Rugo Stone, LLC,
Natural Stone & Mosaic Contractors
Lorton, Virginia
Stone Supplier, Stone Fabricator,
Stone Installer

Other Project Team Members:

Saint John the Apostle
Catholic Church
Client

Franck & Lohsen Architects
Architect

Whiting Turner
Contracting Company
General Contractor

Stone:

Bianco P Marble, Antique Algerian,
Yellow Onyx, Giallo Siena Marble,
Calacatta Vagli Rosato, Porta Santa,
Marble, Hauteville, Verde Aosta,
Rosso Antico D'Italia,
Bianco Michelangelo Marble

Judges Comments:

"This project stands out because of its complexity and effort to execute load bearing stone construction."

"Preservation of this altar was extremely detailed and required master craftsmanship."

"A craftsman's labor of love."

Saint John the Apostle Catholic Church Leesburg, Virginia

The new Roman Catholic Church dedicated to Saint John the Apostle is located in the historic town of Leesburg, Virginia. This project is an example of salvaging sacramental elements and incorporating them into a new church's design. Rugo Stone was hired to dismantle the altar from a church in Newark, NJ and relocate the altar to Leesburg. The dismantle period lasted four weeks. Working 14 hours per day, 7 days a week, Rugo successfully dismantled the rear altar which rose 35 ft. off the floor. In May 2012, the Rugo installation team erected an overhead crane system designed to lift and install the massive marble elements. Rugo's marble masons and riggers erected the entire rear altar over a 10 week period.

Rugo also restored and fabricated various replacement pieces, installed five side shrines, the main altar, the pulpit and three restored baptismal fonts. In addition, Rugo was commissioned to carve two sculptures; Saint Mother Teresa and Pope John Paul II, along with two small bas-relief carvings of Saint Peter and Saint Teresa. The work was completed on August 2, 2012 and the church was dedicated on schedule, August 3, 2012.



MIA Member Companies:

Camarata Masonry Systems, Ltd.

Houston, Texas
Stone Contractor

Tennessee Marble Company

Friendsville, Tennessee
Stone Fabricator

Other Project Team Members:

Harris County

Owner

PGAL

Architect

Architexas

Preservation Architect

Vaughn Construction

General Contractor/Client

Stone:

Georgia Pearl Gray



Judges Comments:

"Lots of expertise was necessary to correctly match the original stone design."

"Quality of craftsmanship shows not only in appearance but in detail."

"Challenging restoration in technical accomplishment."

"An intense, thorough, resourceful re-creation of an amazing place."



1910 Harris County Courthouse Restoration Houston, Texas

Completed in 1910, the fifth Harris County courthouse was designed by the Dallas firm of Lang and Witchell in a Beaux Arts or Classical Revival style with a requisite dome and Corinthian Columns. In 1953, "updates" to modernize the style of the building and to increase its useable interior space resulted in massive architectural degradations. The most profound and unfortunate alterations occurred in the building's interior. Camarata Masonry Systems, Ltd. was tasked with helping restore the building to its original splendor. Its scope of work included the removal, cataloging and storage of much of the existing stone (under a prior contract with the county); the cleaning, restoration and reinstallation of the salvaged stone; the supply and installation of the new stone material to match the old stone (inclusive of book matching and diamond matching); the cleaning and restoration of the existing stone that remained in place; the supply and installation of the new historically matched ceramic tile and mosaics (inclusive of the tedious process of filling in the trenched areas); the restoration of the existing ceramic tile that remained in place and the supply and installation of the new ceramic tile in the judge's chambers and restrooms. The result is a well executed, highly ornate stone and mosaic tile project that many said could not be done, executed by a skilled workforce that many said did not exist.



MIA Member Company:

Stones and Roses International Co. Ltd.
Samutprakam, Thailand
Stone Supplier
Stone Fabricator
Stone Installer

Other Project Team Members:

Mr. Yangyong Prathuangwong
Client

Pattapon Prathuangwong
Architect

UPT Group United
General Contractor

Stone:

Buff Sandstone, Beige Sandstone,
Cream Limestone, White Limestone,
Black Slate

Judges Comments:

“... a very modern design which achieves an elegant and luxurious interior. The beige and cream sandstone complement well with the warm teakwood finishes and make for a classic atmosphere.”

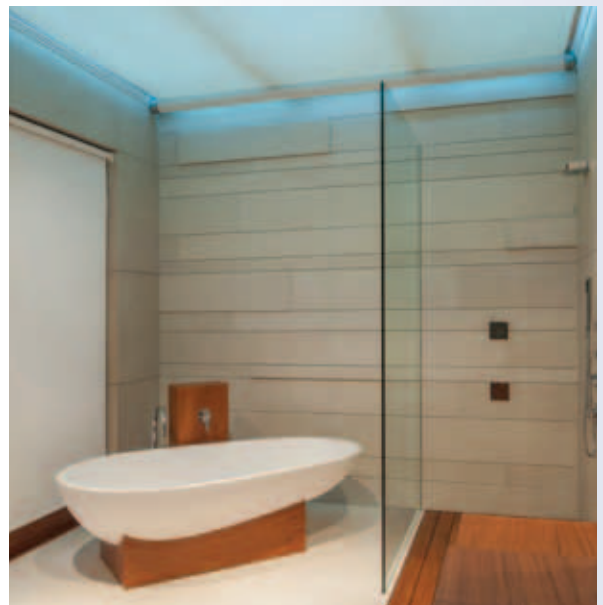
“A disciplined, restrained approach yields a very livable environment.”

“Well executed concept involving peace and tranquility within a living space.”

Muang Thong Thani Residence Nonthaburi, Thailand

The primary concept was inspired by the idea of Asian privacy: nature, peace and solitude. The sandstone walls accentuated with teak wood flooring give the feeling of a balance of natural elements within the house. Each of the feature walls successfully devise a natural partition against less positive surroundings. This allowed the architect to create a tranquil confine for the owner to reside.

The secondary concept stems from the owner's individuality. The feature walls put an emphasis on elements of space, time and ambiance created by natural light, beams, a skylight, shadows and texture of materials as the sun moves, producing continual changes of various dimensions. This design is purely driven by the needs of the owner coupled with the composed ideals of the architect.



Commercial Interior | Award of Merit



St. Regis Spa Miami Beach, Florida

MIA Member Company:

**Twin Stone Designs
& Installations, Inc.**

Hollywood, Florida
Stone Supplier, Stone Fabricator,
Stone Installer

Other Project Team Members:

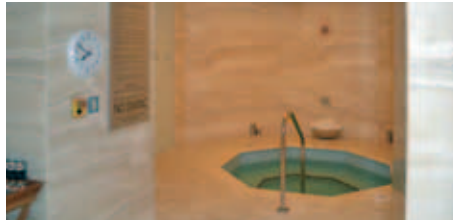
Starwood Hotels & Resorts
Client

Yabu Pushelberg
Architect/Designer

Coastal Constructions
General Contractor

Stone:

Navona Travertine
Spring Creek Marble

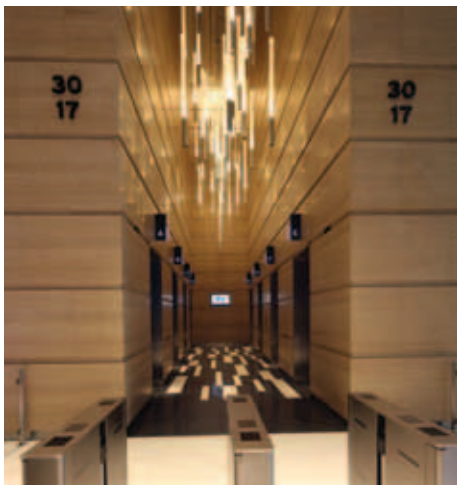


Judges Comment:

"Travertine stone is used in an elegant combination of complementary materials and colors. In particular, the choice to emphasize the veins of the natural stone and to play out deliberately the book matching of slabs gives strong characteristics to the interior spaces."

The comfort of the St. Regis Spa, with interiors designed by Yabu Pushelberg, showcases a modern style with custom furnishings and finishes. The Remède Spa is an extension and perfect complement to the St. Regis Resort located at Bal Harbour in South Florida. A palette of soothing colors with striking chartreuse accents, beautiful marble floors and walls, and luxurious spaces invite guests to feel one with nature and to delight in discovering the sea-inspired themes throughout. The high-end selections of natural stone allowed the achievement of an elegant and inspirational atmosphere. All floors and walls are clad with the highest quality Italian Navona Travertine and the reception desk with the stunning Spring Creek has transformed this 12,000 sq. ft. spa into a sanctuary of tranquility. Twin Stone achieved the main goals of fine workmanship and top quality materials at the St. Regis Spa.

Commercial Interior | Award of Merit



Ocean Financial Centre Singapore

MIA Member Company:

M&G CONTRACTS (S) PTE LTD
Singapore
Stone Supplier, Stone Fabricator

Other Project Team Members:

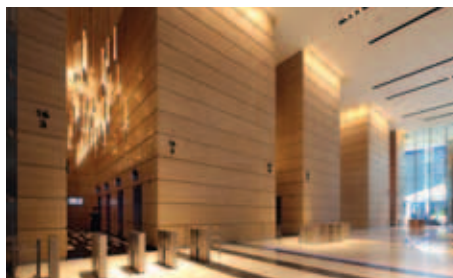
Ocean Properties LLP
Client

Pelli Clarke Pelli Architects
Design Architect

Architects 61
Local Architect

Stone:

Travertino Chiaro
(Light Classico Travertine)



Judges Comments:

"Designed to reflect a "carved-from quarry" image."

"... impresses with a warm and elegant interior underlined by the choice of using a vein cut travertine."

"Uniformity of veining and excellent implementation."

M&G Contracts was tasked to fabricate and supply Travertino Chiaro from Italy for the feature wall of this prominent project. The stones were carried along a continuous layout from the main lift lobby interior to the external walls, measuring 50 ft. high with a combined length of more than 656 feet.

The challenge was to follow the design intent of having vein-cut travertine presented in a continuous and seamless manner, so that it appears as though the walls were carved out directly from the quarry.

Blocks were pre-selected and inspected at the quarry to ensure that the size, color and veining were suitable for the project. Fabrication was thoroughly planned, with each bundle of slabs from individual blocks marked and assigned to a specific 'layer' of each elevation according to their veining character, before further processing in a slab-matched sequence to ensure the continuous flow of the veins. Finally, all the cut panels for each elevation were dry laid for approval, adjusted as required, and marked accordingly for installation.

Commercial Interior | Award of Merit



The Smith Center for Performing Arts Las Vegas, Nevada

MIA Member Companies:

Intertile Natural Stone Surfaces
San Leandro, California, Stone Supplier

Superior Tile and Stone
San Leandro, California, Stone Installer

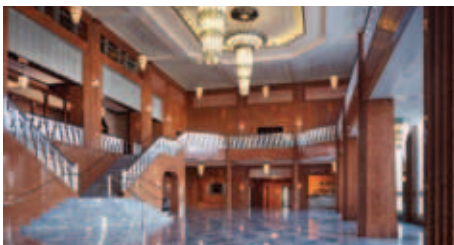
Other Project Team Members:

David M. Schwarz Architects
Architectural Design

Whiting Turner
General Contractor

Stone:

Fior di Pesco
Rosso Asiago



Judges Comments:

"The choice of stone materials with large amounts of Rosso Asiago marks a colorful crescendo in reds on all interior surfaces from walls to floors. With this addition, the architecture in Las Vegas is certainly enriched in its already widespread citations of historical languages."

In search of a timeless and elegant design befitting a world class performing arts center, Myron Martin, President and CEO of the Smith Center, selected David M. Schwarz Architects' Art Deco style, which incorporates 1930's motifs and echoes the design elements of the Hoover Dam.

Intertile Natural Stone Surfaces imported all the marble cut-to-size and ready for installation from Italy. The main floors are composed of light and dark polished Fior di Pesco in an alternating pattern. The walls are polished Rosso Asiago installed in book and diamond matched patterns.

The success of the project was largely due to the quality of Superior Tile and Stone's engineering team, the accuracy of the fabrication and the skill of the masons, setters and finishers that installed the stone. The two Founders Walls were perhaps the most difficult aspect of coordination. Each wall is composed of eight perfectly aligned diamond matched panels. One is a curved wall in the concave rotunda entry. Custom fonts were developed for engraving over two thousand characters, and many of the founders' names span more than one marble panel.

Commercial Interior | Award of Merit



El Paso Energy Building Houston, Texas

MIA Member Company:

Camarata Masonry Systems, Ltd.
Houston, Texas
Stone Contractor

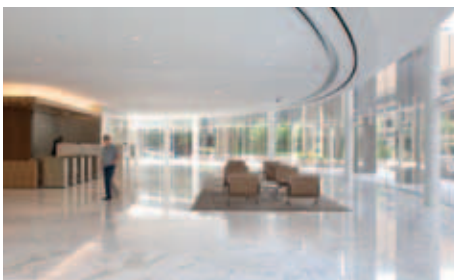
Other Project Team Members:

Epec Realty, Inc., Owner
Gensler Architects, Architect
Gilbane Building Company,
General Contractor/Client

Savema
Cold Spring Granite Company
(MIA Member Company)
Stone Fabricators

Stone:

Sunset Red Granite, Victoria White Granite, Black Granite, Calacatta Gold Marble, Impala Black Granite



Judges Comments:

"... beautifully lit interiors where the daylight floods the expansive areas of granite and enhances its colors."

"A restrained installation that allows the natural veining to sing."

"Use of classic material in simple design."

All 32 stories of the El Paso Energy Building received a renovation while the building remained fully occupied. A major feature of the redesign is the hanging radius glass walls that stretched over two floors surrounded by Calacatta Gold marble on the inside and Impala Black granite and Victorian White granite at the basement level and exterior.

CMS was responsible for the installation of 13,000 sq. ft. of flamed Sunset Red granite floors, 28,000 sq. ft. of flamed Victoria White granite floors and 2,000 sq. ft. of flamed Impala Black granite floors. The 1st and 2nd floors consisted of 22,000 sq. ft. of polished Calacatta Gold marble, 1,000 sq. ft. of polished Impala Black granite and 100 sq. ft. of polished Victoria White granite. The sub-basement and the tunnel area consisted of 17,500 sq. ft. of granite. CMS was also responsible for the procurement and installation of 8,000 sq. ft. of quarry floor tile, 40,000 sq. ft. of white glazed wall tile, 2,000 sq. ft. of grey porcelain floor tile, 1,000 sq. ft. of glass tile and 337 lavatory tops.

Commercial Exterior | Award of Merit



Brickell World Plaza Miami, Florida

MIA Member Company:

Titan Stone, LLC
Pompano Beach, Florida
Stone Contractor, Stone Installer

Stone:

Cappuccino Mocha Quartzitic Limestone
Black Pearl Granite, Silver Pearl Granite
Palladium Coral Limestone



Other Project Team Members:

Forum Group, Owner
RTKL Architects, Feature Wall Architect
Sasaki Associates, Exterior Plaza Designers
John Moriarity & Associates
General Contractor
Curtain Wall Design & Consulting (CDC)
(MIA Member Company)
Stone Façade Engineering and Design
Pokarna (MIA Member Company)
Feature Wall & Granite Site Work Fabricator
Marmotech
Coral Stone Site Work Fabricator

Judges Comments:

"A careful selection of interventions from the façade to the plaza integrates beautiful geometry, greenery with water and natural stone."

"The simplicity and richness of the hovering panels anchor the plaza below."

The 600 Brickell includes a high-rise office tower and 30,000 sq. ft. Brickell World Plaza. The development's feature wall was envisioned to create a monumental relationship between the tower and the public plaza below. Stone was selected to remain durable, yet elegant over time, but also needed to have enough veining and contrast to appear as stone when viewed from below. As such, visually-linear Cappuccino Mocha quartzitic limestone was selected as the primary stone with Black Pearl granite surrounds. Three primary sections, each 52' tall by 25' wide, extend 100' above the plaza—with 4 sub-sections separated by granite reveals. Installing book-matched and end-matched stones, Titan had to exercise extreme care, and no breakage occurred. Also, all perimeter edges were epoxied together requiring "blind" anchorage, achieved with a system designed by Titan and CDC to allow for last minute adjustments in three-piece anchor assemblies. Flamed, brushed Silver Pearl granite provides a soft gray palette for the hard surfacing. With polished Silver Pearl for the cubic fountain weirs and planter copings, more dramatic color was exposed. The Black Pearl fountain flooring creates a visual link to the feature wall above.

Residential Interior/Exterior | Award of Merit



Masterpiece of Saddle River Upper Saddle River, New Jersey

MIA Member Company:

Creative Edge Master Shop, Inc.
Fairfield, Iowa
Waterjet/Stone Fabricator



Other Project Team Members:

Kevo Corp
Stone Installer, General Contractor
Levantina USA, Inc.
(MIA Member Company)
Nasco Stone & Tile
Stone Suppliers
Aalto Design
Kevo Corp
Designers
Stone:
Crema Marfil, Emperador Dark,
Jerusalem Gold, Indus Gold,
Quetzel Green, French Vanilla

Judges Comments:

"A beautiful expression of craftsmanship in mosaics and floor tiling."

"Beautiful decorative element using new technologies in stone cutting."

Developer George Kevo collaborated with Creative Edge Master Shop, Inc., and Aalto Design to design and fabricate floors for a French chateau masterpiece home.

A project of this nature requires meticulous care and excellent craftsmanship. Both developer George Kevo and Harri Aalto, President of Aalto Design, have discerning eyes and discriminating tastes. Working together, Harri Aalto was able to interpret and add his design style to George's idea. Their collaboration yielded floors containing over 20 colors and over 2,200 ft. of stunning artistry.

Some of the stones used in this project were Crema Marfil, Emperador Dark, Jerusalem Gold, Indus Gold, Quetzel Green and French Vanilla. Design and colors were carefully chosen following the developer's interior decorations. After a month of designing and programming, Creative Edge Master Shop, Inc. fabricated and shipped over 40,000 pieces of preassembled stone flooring for installation.

Residential Interior/Exterior | Award of Merit



Krungthep Kreetha Residence Bangkok, Thailand

MIA Member Company:

Stone and Roses International Co. Ltd.
Samutprakam, Thailand
Stone Supplier, Stone Fabricator
Stone Installer

Other Project Team Members:

Silom Furniture Co. Ltd.
Client

General Contractor

Interior Architects 49 Limited
Architect

Stone:

Blue Grey Slate



Judges Comments:

“... superior stone workmanship, but also impressed with how the stone design becomes part of the larger interior concept of the living room. In particular, the wall cladding with its expressive geometry afforded finesse to master the complexity of its formal language.”

The design of the living room continues the non-orthogonal concept of the external architecture. The facets enhance the modernity and underline the light beams entering the room from the south west side. The stone color reacts and contrasts in relation to the angle and orientation to the main natural light source in an array of hues of greys, greens and blues. The continuation of the stone pattern from the outside to the inside emphasizes the flow of the light.

Stones and Roses International (SRI) started this challenging piece of work from a general elevation. The first step consisted in building a 3d model in particle board. Then SRI followed through with the 3d Auto-CAD drawing of the stone wall. Folding the stone along the facets, involved the drawing of more than 40 sections which were later assembled at precise angles. The last step consisted in calculating the size and angle of each slab for production. SRI also designed and manufactured the steel structure which was erected parallel and recessed from the stone wall in order to receive the dry fixing anchors for the installation of the stone slabs.

Restoration/Renovation | Award of Merit



Cleveland Museum of Art Cleveland, Ohio

MIA Member Company:

Polycor
Quebec, Canada
Stone Supplier, Stone Fabricator

Other Project Team Members:

Rafael Vinoly Architects
Architect/Designer

Cleveland Marble Mosaic Co.
(MIA Member Company)
Stone Installer

Panzica Construction Company
General Contractor

Stone:

White Cherokee Marble
Newton Brown Granite



Judges Comments:

“A beautiful synthesis between the classicist building and a new addition where stone takes the role of the mediator of styles.”

“Amazing project combining a historic restoration and a new cultural building.”

Museums may be rooted in time, but growth calls for contemporary transitions. In 1999, New York-based firm Rafael Vinoly Architects took on the challenge to expand and renovate the Cleveland Museum of Art, while keeping in mind the historic significance of the museum's existing design.

A strict adherence to the team's preservation goals resulted in Polycor providing the building's original marble, White Cherokee, from its quarry in Tate, Georgia. Once quarried, the fabrication and finishing of pieces required acute attention to detail to maintain the integrity of the original design, including following the original specifications of the project from 1916. The team relied on existing structures, in addition to the building's original drawings and photographs from that era, to ensure accuracy in recreating molding and intricate details through the project. Central to the expansion project was the use of original materials specified in 1916. White Cherokee was therefore complemented by Newton Brown granite from Quebec, Canada. The final product is considered to be the largest cultural project in all of Ohio.

Craftsmanship | Special Award of Merit



The Annunciation at Ave Maria University Ave Maria, Florida

MIA Member Company:

Titan Stone, LLC
Pompano Beach, Florida
Stone Contractor



Other Project Team Members:

Marton Varo
Annunciation Sculptor
Ave Maria University
General Contractor
Curtain Wall Design & Consulting (CDC)
(MIA Member Company)
Stone Façade Engineering and Design
Stone:
Carrara Marble

Judges Comments:

"This is one of a kind sculptural work, which sustains with merit a strong trade of exceptional craftsmanship."

"The ability to "see" sculpture (art) in a natural block of marble and execute that vision is to be acknowledged."

"Great artistic design and implementation."

Ave Maria University staged a world-wide competition to solicit a work of art for the main entry niche of its existing stone-clad Oratory. Carrara-based sculptor Marton Varo submitted a design of the Annunciation of the Blessed Virgin Mary to be carved from White Carrara Marble quarried from the still-active Cave Michelangelo, from which the marble for St. Peter's famous Pieta was extracted. To create this sculpture, Varo required over 120 tons of raw Carrara Marble blocks, which he selected from the quarry himself.

The configuration of the existing façade surround, projecting well beyond the face of the Oratory substrate, made it impossible to utilize a traditional crane configuration to hoist the sculpture. As such, Titan Stone and CDC devised a counter-balanced beam trolley projecting from below the end of the crane outward so that the 7 feet wide by 7-1/2 feet tall pieces once hoisted to level could then be moved horizontally into place under the overhanging stone. Titan was also forced to provide a great deal of perimeter field cutting to achieve proper alignment within these difficult constraints.

Sustainability | Special Award of Merit



MDA Expansion Tucson, Arizona

MIA Member Company:

Las Vegas Rock Inc.
Jean, Nevada
Stone Supplier, Stone Fabricator



Other Project Team Members:

Carpenter Sellars
Architect/Designer
Sundt
General Contractor
Muscular Dystrophy Association
Client
Diversified
Stone Installer
Stone:
Meta-Quartzite

Judges Comments:

"This is a project that can be appreciated by the architect and the stone contractor, but also noticed by the lay person. Excellent craftsmanship and design elements. Classic blend of materials and stone. Great attention to detail."

The Rachel Ann Perkinson Center is a two story, 15,000 sq. ft. expansion of MDA's national headquarters building and was built to the highest standards of "green" design and energy efficiency. It was designed to fit into its natural desert surroundings and complement, rather than mimic, the bold architecture of the original building. The LEED® project achieved Gold-level certification.

The exterior and interior include polished desert stone cladding. The stone acted as a unifying element between the natural surroundings and the architecture of the building. The natural stone was a large contributor to the LEED Gold Certification. The use of this indigenous resource and its proximity of 500 miles to the job site reduced the environmental implications which typically result from the transportation involved on a project. Las Vegas Rock is the only Silver Cradle-to-Cradle natural stone in the world. There is zero waste in production – 100% of the Las Vegas Rock by-product is re-purposed. These attributes along with the cradle-to-cradle certification allowed for another point in the LEED rating system for the Innovation in Design Credit.

MIA Migliore Award for Lifetime Achievement

50-Year Career in Stone Industry Leads to Migliore Award

In early 2013, Paul Vigna celebrates his 50th anniversary in the stone business as one of the most celebrated men in the natural stone industry – winner of the 2012 MIA Migliore Award for Lifetime Achievement. Few MIA members can boast such a long and admirable record of expert and ethical business practices.

Paul has a very unique work history, first starting in the field, and later moving into the office setting as an estimator, and eventually becoming the President of the Stone Division for Artisan Tile & Marble Company of New Jersey, Inc.

It started in 1963, when Paul was looking for work, his uncle told him there was a temporary job available at Everlasting Terrazzo, Tile and Marble in Trenton, New Jersey. He took the job. “I started as a helper in the field for a union contractor, became a setter and eventually worked my way into the office,” Vigna remembers.

Impressed with his work ethic, management sent him to night school to learn blueprint reading, and then promoted him to drafting. To further his education, he took architectural courses at Mercer County Community College and Princeton University.

After working with Paul on a few projects, a local architect offered him a position in the firm as a field inspector, but Paul decided to remain in the stone business.

After spending many years working in Trenton, Atlantic City and New York, Paul operated his own firm, Reynolds Tile, Terrazzo and Marble in Trenton for 14 years. In 1992, he joined Artisan Tile & Marble Company of New Jersey, Inc., which today is one of the largest commercial stone contractors in the state. Shortly after he joined the company, he was promoted to president of the firm’s Artisan Stone Division. Artisan Tile & Marble Company of New Jersey, Inc. is well known in the New York City and northern New Jersey market for expert installations of complex stone and tile projects, as evidenced by the 35 Golden Trowel awards that Artisan Tile & Marble Company of New Jersey, Inc. has received over the years.

“Paul is one of those unique, rare individuals who have knowledge beyond compare,” said John Sekora, chairman of Artisan Tile & Marble Company of New Jersey, Inc.. “He is a true craftsman and artisan. He knows his field. He works with general contractors, architects, and designers. His knowledge is so vast that everyone wants a little part of him. He is responsible for many of the Golden Trowel Awards that we have received. His name is well known in the industry.”

Along with having an outstanding career in the working part of the industry, Vigna has also given back to the stone industry after being elected to the MIA Board of Directors in 2000. He served as treasurer 2001 and moved through the ranks to become President of the Marble Institute of America in 2004. He is still one of the MIA’s greatest supporters. He also believes in the next generation and has spent countless hours mentoring newcomers to the industry. For several years, Paul has offered his services as a consultant to the stone industry and general public sharing his expertise and recommendations for stone related projects.

Vigna has a very simple business philosophy: “Surround yourself with people that are better than you. Always tell the truth. Communicate and never pull the wool over anybody’s eyes. Just try to be as straight forward as possible. Give the information they require and do the job you’re paid to do.”

Winning the Migliore Award is bitter sweet for Paul Vigna Jr. Paul and Vince Migliore, the man for whom the MIA Migliore Award for Lifetime Achievement was named, were close friends for decades. Paul said, “I find myself being very humbled with this award.”

“I’ve known two superstars in the stone industry in my life,” says John Sekora. “One of them is Mr. Migliore and the other is my Paul Vigna. He has given so much, not only to the industry and to Artisan Tile & Marble Company of New Jersey, Inc., but as a director and president of the MIA, has become a worldwide leader in the industry.”

Brett Rugo, who nominated Paul for this prestigious award added: “Paul was a very close friend of Vince Migliore, and I am sure Vince would be pleased to see Paul’s name as a recipient of his award. Paul’s commitment to his family, community, and professional life all speak to the well rounded life he has led.”

Paul and his wife, Judy, have been married for 51 years. They have three children, Christopher, Michael and Debbie and enjoy spending as much time as possible with their six grandchildren.



Paul Vigna

President, Stone Division
Artisan Tile & Marble Company
of New Jersey, Inc.
Somerset, New Jersey



MIA Natural Stone Craftsman of the Year



John Kunz
Field Operations Manager
KEPCO+
Salt Lake City, Utah



Thank you to our sponsors:



Passion for Stone Makes for Perfection

You only have to spend a few minutes with John Kunz, field operations manager for KEPCO+ of Salt Lake City, to feel the passion he has for the natural stone business. It is a combination of that passion, and an uncommon talent in working with stone, that have earned Kunz such a coveted award as the Marble Institute of America's Natural Stone Craftsman of the Year.

Few men have had more diverse experiences than the native of Pittsburgh, Pennsylvania, who has been in the stone business for 34 years. Kunz began working as an apprentice stone mason for a residential contractor doing interior walls, floors, and countertops, exterior walls and planters. Little did he know at that time, with each stone he set, he was laying the foundation for a career that would take him to 44 cities and allow him to work on stone projects totaling over 2.8 million square feet of stone, including several of the nation's most impressive and historic projects.

From his first job, Kunz has displayed a work ethic that has been his hallmark ever since. Kunz said, "I owe a lot to my mom and dad, who really taught me what hard work was all about. My dad worked in a steel mill and he was my idol. By his example, he showed me what hard work was all about."

After four years in the business, he became a full-fledged journeyman in Pittsburgh. Three years later, he earned an associates degree in construction engineering from Dean Technical Institute in Pennsylvania. In 1985, Kunz began working on his first large commercial stone project as a craftsman. Within two weeks, he was promoted to shop foreman and responsible for plant operations where he oversaw the project's panel production for 18 months. Panels were completed and stockpiled ahead of schedule, and he was then sent to the job site to act as general foreman for panel installation. He was just 26 years old.

Kunz credits a lot of his management skills to a 62-year-old superintendent at Continental Marble and Granite who urged him to show up for work a half hour early every day so he could teach him the trade.

Kunz eventually took his talents to New England and then to San Diego, where he met Bruce Knaphus, president of Salt Lake City-based KEPCO+. "Kunz tracked us down about a specific job we had down in Rancho Bernardo at the time," Knaphus remembers. "He walked in and looked the part. And when we started chatting, he spoke the part. He was strong and knew his way around the stone business. It has proved to be the case for 20 years."

In 1992, Kunz began working for KEPCO+ as a seasoned journeyman setter and crew trainer. Within a few months he was elevated to foreman, and in 1998 he was promoted to General Superintendent. In 2004, he was promoted to his current role of Field Operations Manager. "John brings a wealth of resources from the field perspective," says Knaphus. "He's probably the most professional field foreman who has come up through working with his hands that I've ever seen."

Part of a team that has won nine MIA Pinnacle Awards in the past decade, Kunz has been the point man in the field for KEPCO+ for projects including: The Cottonwood Corporate Center in Salt Lake City, Utah; Eccles Egyptian Theater/Convention Center in Ogden, Utah; 24 story Grand America Hotel in Salt Lake City, Utah; Nauvoo Temple Re-Creation in Nauvoo, Illinois; New York City's 90 West Building Renovation; Utah State Capitol Expansion; Utah State Capitol Renovation; and the LDS Temple in British Columbia (Canada) to name just a few.

In addition to Kunz's technical resume, those that work with him recognize his intuitive ability to manage his team. He has the ability to see problems before they start and works well with his partners. His understanding of the trade has earned the respect of general contractors, architects and owners. Kunz's expertise is recognized by his clients, and he is often requested to be a part of the project when negotiating with the client.

Kunz always remembers the helping hands he received while growing up in the business and readily shares his knowledge with younger craftsmen. This is a major factor in his selection as Natural Stone Craftsman of the Year.

Kunz added, "I like to give back to the guys today, work with them, give them a chance to grow and give them the opportunity to learn in the field of stone masonry."

In spite of all Kunz's years of experience in the field, perhaps his best quality is his dedication to his wife and his two children. The definitive "Hockey Dad", Kunz's support and commitment to his family is second to none. Through the years, he has dedicated his home life to attending hockey events with his son and horseback riding with his daughter – horse, trailer, and all!

MIA Natural Stone Scholarship Award



Jill Archambeau

Sales/Office Manager
RockSolid Stone Works
Cleveland, Ohio



Jill Archambeau, sales/office manager for RockSolid Stone Works (RSW) of Cleveland, Ohio is the winner of the 2012 MIA Natural Stone Scholarship Award, presented annually to aspiring industry fabricators, installers, apprentices and administrative employees interested in furthering their careers in the stone industry. There is no doubt the future of the natural stone industry is dependent on our ability to attract and keep the best and brightest young talent, and help them develop a genuine passion for the industry as a whole.

Archambeau's selection was based on a 500-word essay explaining her commitment to the natural stone industry. In her essay, Archambeau said, "I've always felt that training is the most important part of any job. I believe this scholarship is one resource that will give me the opportunity to learn, improve and master many new and existing skills. As with any learning opportunity that presents itself, I will share my experience with my co-workers and team. In today's market place, knowledge and improvement of one's self should be a goal for every employee and business owner."

In a letter of recommendation, Kevin Thomas, general manager of RockSolid Stone Works said, "Jill's personal mantra is 'knowledge is power'. She is constantly looking for new or better ways to train her staff here at RSW. She has set up an in-depth training program for all newly hired staff, as well as directing our staff in 'refresher' training courses." Thomas continues, "Jill's drive and energy to meet and exceed the expectations of our customers on a daily basis is truly exemplary. She never ceases to amaze me with her desire to make sure our customers are completely satisfied with all aspects of their purchase – from initial product selection through installation. Most clients today purchase only one natural stone countertop in their lifetime, and Jill's aspiration is to make this event a very pleasurable, fun and rewarding experience. It's been my pleasure to work with Jill at two different locations and at both locations she has excelled."

About the Marble Institute of America



**MARBLE
INSTITUTE**
of America

twitter.com/marbleinstitute
facebook.com/marbleinstitute

Since 1944, the Marble Institute of America (MIA) has served as the authoritative source of information on standards of natural stone workmanship and practice and the suitable application of natural stone products. MIA members include marble, granite, limestone, sandstone, and other natural stone producers and quarriers, fabricators, installers, distributors, and contractors around the world.

MIA is also a leading promoter of stone usage in the commercial and residential marketplaces. MIA produces a number of consumer education materials on the use of natural stone and its proper care and maintenance, and hosts an informative website for consumers and design and construction professionals at www.marble-institute.com.

Code of Ethics

The fabrication and installation of dimension-cut natural stone should meet MIA and other industry standards as articulated in the MIA Dimension Stone Design Manual and other technical publications, along with courteous and professional customer service. To achieve these goals, we pledge adherence to the following principles and policies:

- Our primary objective is a satisfied and happy customer, be it a homeowner, a building owner, or a design professional.
- We will maintain and conduct business in accordance with fair and honorable standards of competition.
- Honesty, integrity, quality, and professionalism guide our firm's business philosophy.
- High standards of health, safety, and product quality will be incorporated into every installation.
- We shall deal fairly with customers, as well as with our employees, our subcontractors, and our suppliers.
- We encourage research to develop new materials, techniques, tools, and equipment, as well as improved methods of stone fabrication and installation.
- We pledge to assist in the education and product knowledge of our firm's clients and customers (builders, kitchen & bath dealers, architects, designers, and homeowners) before, during, and after installation.
- We shall strive to promote a spirit of cooperation within the industry.



MARBLE
INSTITUTE
of America

28901 Clemens Road • Suite 100 • Cleveland, OH 44145 • Phone: 440.250.9222 • Fax: 440.250.9223
www.marble-institute.com | miainfo@marble-institute.com | twitter.com/marbleinstitute | facebook.com/marbleinstitute