



# 2021 PINNACLE AWARDS OF EXCELLENCE





*Congratulations to the winners.*



*Thank you to those who entered.*





# *Recognizing Excellence in the Stone Industry*

<b>AWARD</b>	<b>PAGE</b>
<b>Grande Pinnacle Award</b> .....	<b>4-5</b>
An exclusive Grande Pinnacle award, sponsored by Marmomac, is given to the best project across all categories. This award is bestowed upon the Natural Stone Institute member company and also includes a trip to Marmomac in Verona, Italy for the architect of record for the project.	
<b>Pinnacle Awards of Excellence</b> .....	<b>6-19</b>
Natural Stone Institute's prestigious Pinnacle Award honors stone companies around the world for projects that stand out above the rest.	
<b>Women in Stone Empowerment Scholarships</b> .....	<b>20</b>
The Women in Stone Empowerment Scholarship recognizes Natural Stone Institute members with a strong passion to grow their career within the stone industry. Applicants are considered who have not yet had the opportunity to attend one of the key industry events: TISE, Coverings, or an annual Natural Stone Institute Study Tour.	
<b>Natural Stone Scholarship</b> .....	<b>21</b>
The Natural Stone Scholarship was established to provide educational opportunities for aspiring fabricators, installers, or administrative apprentices interested in furthering their careers within the natural stone industry.	
<b>Natural Stone Craftsman of the Year</b> .....	<b>22</b>
The Natural Stone Craftsman of the Year Award is designed to recognize the skilled individuals who craft and install stone and train the young people who are the future of the natural stone industry. There is nothing more important than excellence in craftsmanship to get the most out of nature's finest and most beautiful building material.	
<b>Women in Stone Pioneer Award</b> .....	<b>23</b>
The Women in Stone Pioneer Award recognizes an advocate within the stone industry for their role in recruiting, retaining, and advancing women. The recipient's performance in promoting women should be exemplary, honorable, and inspirational.	
<b>Person of the Year</b> .....	<b>24-25</b>
The Person of the Year Award is an important annual recognition chosen by the association leadership team. Following the tradition of the award, this year's Person of the Year has given exceptional contribution and leadership to Natural Stone Institute, as well as mentoring and guidance to its executive team.	
<b>Migliore Award for Lifetime Achievement</b> .....	<b>26-27</b>
The Migliore Award for Lifetime Achievement was established in 2003 to recognize an individual who has made extraordinary contributions to the natural stone industry and Natural Stone Institute. The award is named for Marble Institute of America's long-time technical director, the late Vincent R. Migliore, who was the first recipient.	



380 E. Lorain Street • Oberlin, OH 44074  
440-250-9222 • [www.naturalstoneinstitute.org](http://www.naturalstoneinstitute.org)

Disclaimer: Images and notations of project team members presented herein have been supplied to the Natural Stone Institute by the member company submitting the award entry. Every effort has been made for accuracy and thoroughness. The Natural Stone Institute is not responsible for errors or omissions in this documentation, which is intended to reflect the portion of a building, landscape, or other design project in which the submitting member company has been involved.



# *Grande Pinnacle Award*

## Wyoming State Capitol Restoration Cheyenne, Wyoming








---

### Natural Stone Institute Member Company

**Wiss, Janney,  
Elstner Associates**   
Northbrook, Illinois

Stone Restoration Architect

---

### Other Project Team Members

**HDR Architecture**  
Architect of Record

**Galloy & Van Etten**   
Stone Fabricator

**Mark 1 Restoration Company**  
Stone Installer

**Colorado Flagstone**   
Stone Supplier

**JE Dunn**  
General Contractor

---

### Stone

**Fort Collins sandstone**

The Wyoming State Capitol is a National Historic Landmark designed in the Renaissance Revival style by Davis W. Gibbs. The building was constructed in three building campaigns completed in 1888, 1890, and 1917. The center portion of the building was constructed first with the wings expanded during subsequent building campaigns.

Prior to the restoration, distress conditions included delamination of the sandstone at the base of the building, a condition that was likely accelerated by a previously applied clear surface treatment. Severe delamination of the stone was also observed at cornices, column capitals, and other projecting horizontal surfaces where the distress was primarily associated with water exposure and weathering.

The stone quarries from which stone for the original building were quarried in the 1880s were accessed for this project. This included reopening the quarry in Rawlins, Wyoming. New stone slabs were quarried and selected by the project team to match the existing stone on the building.

The stone dutchmen were shop fabricated with standardized profiles typical to individual features of the building. However, the exact size and shape of the existing building profiles varied, as would be expected for a building constructed in many phases. Stone masons in the field were challenged with blending the new stone with the existing, using a variety of techniques to replicate surface texture. For highly decorative dutchmen, the profile of the stone was shop fabricated. However, areas of highly decorative ornament were roughly blocked out to be hand-carved and blended by stone masons in the field. Repairs to existing stone also relied heavily on hand retooling and blending of the stone in the field to restore the historic appearance and provide improved slope to horizontal surfaces that historically collected water. Approximately 3,160 cubic feet and 1,135 individual stone units were fabricated for the project.

---

### Judges Comments:

This project was clearly the most impressive project they looked at this year in terms of complexity, execution, challenges, and outcome. When you consider they did the restoration on a facility's building that was open to the public, they could have written a complete dissertation on the challenges that they must have faced. It's a massive project that shows such a level of skill and craft in so many different areas, it had to win the award. One juror said: "To whomever did this work, I'm going to call them and, just say, 'hats off'! This one is spectacular."





## Architectural Carving/Lettering/Sculpture

# Caryatid Sculpture - The Missing Maiden of Karyai Drama, Greece

Natural Stone Institute  
Member Company

**F.H.L.I. Kiriakidis**   
**Marbles - Granites**  
Drama, Greece  
Stone Supplier/Sculptor

Stone

Thassos White marble



This replica of the "missing" Caryatid statue is created in Thassos marble using a robotic sculpturing machine and finished by hand. To create this one-to-one replica, careful selection of a suitable marble block was required, one which can be found only in the small Greek island of Thassos, known throughout the centuries for its sparkling and pure white marble. The rareness of this all-white marble was challenging, given the fact that the company wanted to carve the statue from one piece. Detailed 3D modeling took over 30 days of carving time on the robotic machinery and over two months of careful hand finishing in order to "breathe life" into this emblematic 2.31m tall sculpture. F.H.L.I. Kiriakidis Marbles - Granites' in-house sculptor, who studied at the marble sculpturing school of Tinos, carefully carved all aspects of the headdress and the fluidly draping veil and tunic that are flattering this female figure.

This specific sculpture is one of the total 6 Caryatides or "maidens of Karyai," maybe the most emblematic sculpture groups, highly recognizable and synonymous to ancient and modern Greece. The Caryatides are a perfect example of Hellenic sculpturing and craftsmanship, while proving the eternal sustainability of natural stone and especially marble.

The "6 daughters of Karyon" originally stood together for over 2,300 years at the south porch of the Erechtheion, at the Acropolis in Athens. The original sculpture of this "missing" Caryatid replicated by F.H.L.I. Kiriakidis Marbles - Granite has stood in the British Museum of London since the abduction of Lord Elgin in 1801, while the other five sisters have remained united since 1979, in their original formation, at the Acropolis Museum in Athens. The empty spot (second from the left side) of the "missing Caryatid" symbolizes the constant demand of her "sisters" to return to her rightful home.

### Judges Comments:

Great display of craftsmanship. Innovative use of technology and hand work, and laser scanning is a good way of blending the two approaches. Felt authentic. A difficult quarry and even more difficult to find the perfect block to allow such quality of control. A little jewel.





## Commercial Exterior

# Charles Library at Temple University Philadelphia, Pennsylvania

Natural Stone Institute  
Member Company

**Coldspring** 

Cold Spring, Minnesota  
Stone Supplier/Fabricator

Other Project Team Members

**Snøhetta**  
Architect

**Dan Lepore & Sons**   
Stone Installer

**Stone**  
Mesabi Black granite



Located in Philadelphia at Temple University, Charles Library is one of the country's most modern and significant new library constructions. With a design that pushes the limits of creativity, the library fulfills the architect's intent to spur imagination and inspire excellence. Key to the building's striking design is more than 37,000 square feet of black granite.

The architect visited the granite quarry before the project's start to view numerous mockups of the material and finish options. Throughout the process, the stone supplier worked closely with the design team to ensure they understood the material's natural characteristics and the color range.

Vertical sections of the granite in a split-face finish clad the library's solid base and coordinate with the existing campus landscape. A total of more than 30,000 square feet of Mesabi Black granite pieces were successfully produced with manufacturing skill and quality. To keep the costs of the rusticated pieces within the owner's budget, the stone supplier evaluated its processes from the outset to develop production efficiencies.

The long, slender granite pieces presented a challenging installation. Because of the stones' small size, they rely on two points of attachment rather than the typical four. The stone's installation on a sealant-less, caulk-less rainscreen system allows for water drainage and evaporation, preventing water from penetrating the facility's interior while lowering the risk of wall rot.

Black granite also provides a key design element for the building's green roof, where it adorns the façade and coping. The dimensional 2-foot by 2-foot granite blocks provided challenging rigging, logistics, and installation at the building's parapet.

A beautiful outcome for a challenging design was accomplished at every stage of the project by the skilled, well-coordinated team. Today, Charles Library is a centerpiece of Temple University and the city of Philadelphia, where its inspiring design promotes learning, innovation, and community.

### Judges Comments:

Fell in love with it. Well controlled stone color and quality that respects the proper use of stone. Loved the texture of the surface treatment and the innovation of the open-faced rainscreen design. Well executed.





## Commercial Exterior

# Chateau Lynch-Bages New Bordeaux Winery Pauillac, France



Natural Stone Institute  
Member Company

**VM Kaldorf** 

Titting-Kaldorf, Germany  
Stone Supplier/Fabricator

### Other Project Team Members

**PEI Architects**  
Architect

**BPM Architects**  
Site Architect

**Marbrier Pierre Taille**  
Stone Installer

### Stone

Jura beige limestone  
Nero Assoluto granite

The Lynch-Bages Chateau in the French Bordeaux region was recently redesigned as a multi-use building. Embedded in a picturesque winemaker village, the complex now unites the formerly separate operations of vinification, a wine barrel cellar, office space, and a visitors' center. The owner family, PEI Partnership Architects of New York City, and local architect BPM of Bordeaux took on the unprecedented task of harmonizing different functional and design-related requirements.

By working with transparency, light and open space, patrons can see the wine making operations from the reception and tasting area. This immersive brand experience brings the clientele much closer to the product. The design is translating the existing traditional Chateau into today using glass and stone in clear geometrical shapes.

The façade is of Jura beige vein cut limestone, quarried and fabricated by VM Kaldorf and a contrasting base board of Zimbabwe black granite, both 40mm thick. The veining creates a flowing effect which is evenly accentuated by fluted pieces above and at the sides of the reception and main dock entrance. Marbrier Pierre Taille of Paris installed the stone façade as the center piece of the entrance area welcomes the client with warm color tones and the self confidence of a very successful Bordeaux winery.

The design intent of a plain and undisturbed surface was met by replacing visible joints with joggled joints all over the façade. They were designed by VM Kaldorf and every single panel was rebated in a distinctive pattern on their CNC machinery. Fluted pieces with all honed surfaces, sharp and square edges serve as special design elements. Assembled from a mother panel and pinned and glued fins, precision and care in fabrication, assembly, and matching the veining were paramount.

Nine years from planning to groundbreaking resulted in something truly unprecedented and special: The new Lynch-Bages winery in Pauillac.

### Judges Comments:

Ingenious detailing of the open joint system to eliminate a pass-through joint while maintaining the functionality of air passage necessary for pressure equalization. The stone fabrication deserves credit. Quality work. Took the design and executed it very well. Loved the hidden door.







## Commercial Exterior

# Frederik Meijer Gardens & Sculpture Park Grand Rapids, Michigan

Natural Stone Institute  
Member Company

**Coldspring**  

Cold Spring, Minnesota  
Stone Supplier/Fabricator

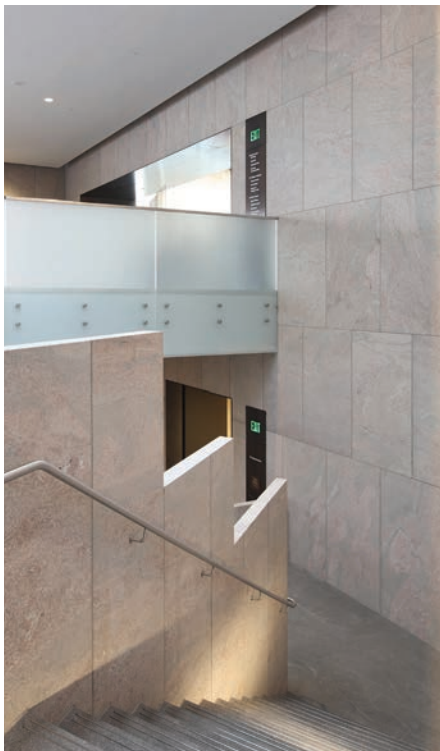
Other Project Team Members

**Tod Williams Billie Tsien Architects**  
Architect

**JK Masonry** Stone Installer

Stone

Echo Lake granite



In 2017, Frederick Meijer Gardens announced plans for a \$115-million expansion, including a new 69,000-square-foot Welcome Center and upgrades to their amphitheater. More than 71,000 square feet of Echo Lake granite played a key role in meeting the design vision.

Design goals included tying together the many parts of the Garden into a coherent and understandable whole and creating a Welcome Center that amazed everyone who entered. During the design team's initial quarry visit, Coldspring provided a large-scale mockup to demonstrate the panels in various finishes. The architects had very specific requirements for the allowable color range, markings, and inclusions for the granite, which the supplier was able to meet.

During extraction, the stone manufacturer did an excellent job chasing the desirable black markings and not allowing unwanted markings in the product. In the fabrication phase, the manufacturer expertly handled the large pieces moving through the plant.

Many of the panels for the Welcome Center were extremely large rectilinear pieces which required special detailing for anchors and relief angles for installation, with type 31 anchors on the back. In addition, minimizing joints for the large piece sizes was a requirement in the stone detailing.

For the 70-foot-tall walls of the Welcome Center, the installation contractor used a series of cranes mounted to the wall and bolted on with trolleys. To set the granite along the roof, the installation contractor followed advice from Coldspring on using clamps to set the stone since there was no scaffold or crane access.

Echo Lake granite proved to be a beautiful material to ground and define the landscape at Meijer Gardens. The upgrades now allow Meijer Gardens to continue serving an expanding audience with the vision of connecting the community, land, and the arts.

### Judges Comments:

The stock control was really, well executed. A pleasing looking installation. Great job of keeping it homogeneous yet still allowing the fairly, strong movement of the pattern to symbiotically move throughout the walls, and even the contrasting floor, creating a cohesive whole. Elegant. This is museum quality stonework. A celebration of stone and a nice backdrop to the art and sculpture.



## Commercial Interior

# Brookfield Place Sydney, Australia



### Natural Stone Institute Member Company

**Euromarble**   
Carrara, Italy  
Stone Supplier

### Other Project Team Members

**Make Architects**  
Architect

**Architectus**  
Executive Architect

**Deemah Stone**  
Stone Installer

### Stone

**Calacatta Oro marble**

Brookfield Place is located within the heart of Sydney's central business district. It comprises a 6 Star Green Star-rated office tower, two restored heritage buildings, premium retail space, and a world-class transit hall for Wynyard Station, one of the city's busiest transit hubs.

Designed by Make Architects with Architectus as Executive Architect, the office tower element lays that stitched the pieces together online before the physical pieces were cut to size and precisely installed. The attention to detail and precision of this process has achieved a beautiful finish with the walls, floor and desk marble simulating a continuous vein.

To this end, the office lobby design and materiality had to give an immediate impression of the premium nature of the workplace, and the materials and their installation needed to be of the highest level of quality. Calacatta Oro marble was chosen for the floor, walls, and desk for this reason.

The ambition was to lay the marble as if it was one single piece. Euromarble in Italy and the architect and contractor in Australia collaborated closely to painstakingly create a virtual dry lay that stitched the pieces together online before the physical pieces were cut to size and precisely installed. The attention to detail and precision of this process has achieved a beautiful finish with the walls, floor and desk marble simulating a continuous vein.

The wall and floor sections are 2cm thick. To minimize waste and improve sustainability, the wall panels have been laid with a honeycomb aluminium backing, which allowed double the quantity of square meter installation from one marble block.

#### Judges Comments:

One must admire the stock and vein control achieved through the detail oriented dry lay process, and by how well they controlled it. Wish we could walk this job and see all of it. There is a continuity to the flow of the veins that is really appealing. Virtual dry lay technology is still innovative, especially when you achieve this kind of outcome. Masterfully done.







## Commercial Interior

# Corpus Christi Catholic Church Aldie, Virginia

Natural Stone Institute  
Member Company

**Rugo Stone**   
Lorton, Virginia

Stone Supplier/Fabricator/Installer

Other Project Team Members

**McCrery Architects** Architect  
Stone

Fior di Pesco Carnico marble  
Bianco Carrara C marble  
Nero Portoro marble  
Rosso Francia marble  
Grigio Carnico marble  
Indiana limestone



This altar of sacrifice includes particularly complex monolithic gothic tracery and inlay panels, along with a decorative marble mosaic band framing the tracery panels. The project required a careful material selection and fabrication.

The entire fabrication was completed at Rugo Stone's studio in Lorton, VA. The carefully selected blocks and slabs were milled on 5-axis machines, according to highly detailed 3D drawings. After the CNC process, a team of stone carvers finished all the fine elements by hand, creating an elegant path of the tracery. The honed matte finish was applied by hand sanding due to the elaborate curvature of the panels. Located within these tracery panels are double inlays of colored marble, that were precisely cut with a waterjet and expertly assembled. The color contrast of the different marbles and the seamless transition of the inlays create an exquisite image.

Another example of the fine craftsmanship is the mosaic marble banding, created from small 1-1/4" x 1/4" tiles, cut to a zero-face tolerance dimension. Each tesserae's precise location was selected by veining. Adding to the complexity, the four-tone checkerboard banding is canted on an angle with the mitered corner cuts.

Once the fabrication was completed, the entire altar was dry set to ensure the perfect fit. The ornate monolithic limestone baptismal font was also created in the same process of combining the 5-axis CNC machines and hand carving at the Rugo Stone studio. The antique altar rail was salvaged by Rugo Stone and restored in house. The brass rails, as well as the 5" thick classic Portoro marble base were expertly brought back to their grandeur. The installation was flawless, thanks to the expertise of Rugo Stone's masons. This altar is the finest piece the company has produced in their studio. They, the owner, and architect could not be happier with the result.

### Judges Comments:

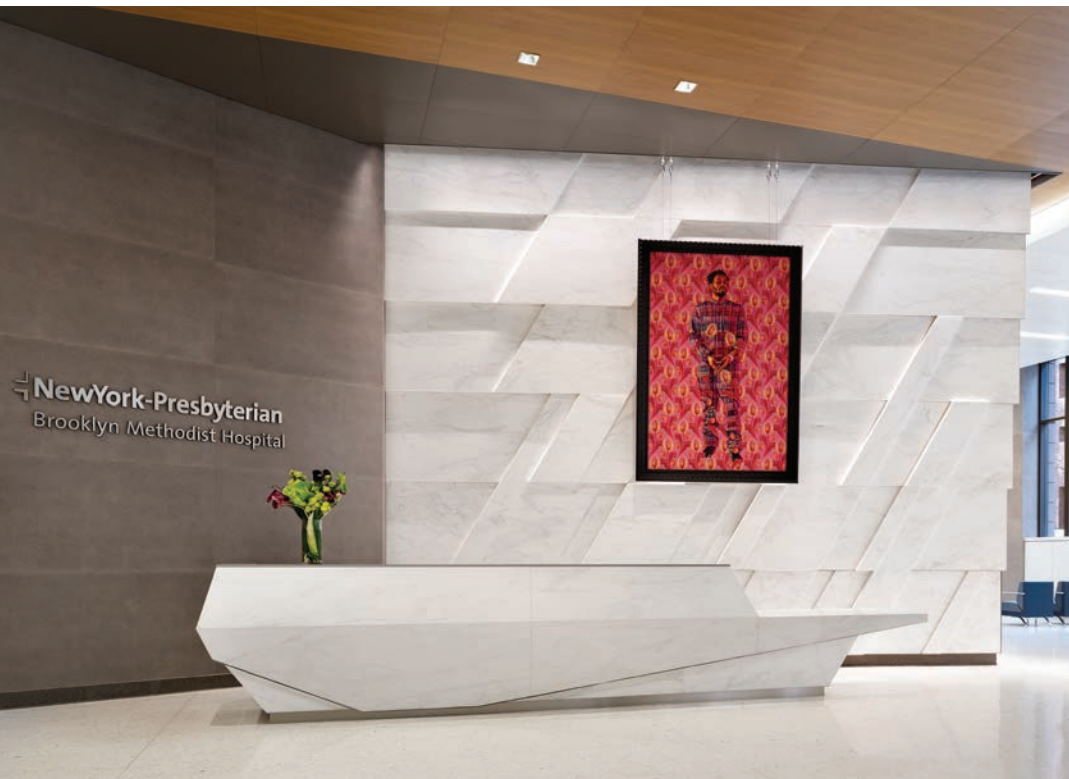
Despite the wide availability of 5-axis machine cutting technology, we still think this project has an exceptional level of craft exhibited in the intricate nature of these inlays. It is really well done. The complexity of the carving, the dry set - all done in their studio - there was nothing lacking in any respect. Technology aside, this is work that only a handful of companies in the country could pull off with this level of quality and with this level of control.





## Commercial Interior

# New York-Presbyterian Brooklyn Methodist Hospital Brooklyn, New York



**Natural Stone Institute  
Member Company**

**Jantile Specialties** 

Armonk, NY  
Stone Installer

**Other Project Team Members**

**Perkins Eastman**  
Architect

**Marmi e Graniti d'Italia**  
Stone Supplier

**Stone**

**Calacatta Caldia marble**

The Center for Community Health at New York-Presbyterian Brooklyn Methodist Hospital, is located on 6th Street between 7th and 8th Avenues in the quaint Brooklyn neighborhood of Park Slope. Jantile Specialties, of Armonk, New York, won the bid to furnish and install all tile and natural stone throughout this new construction project.

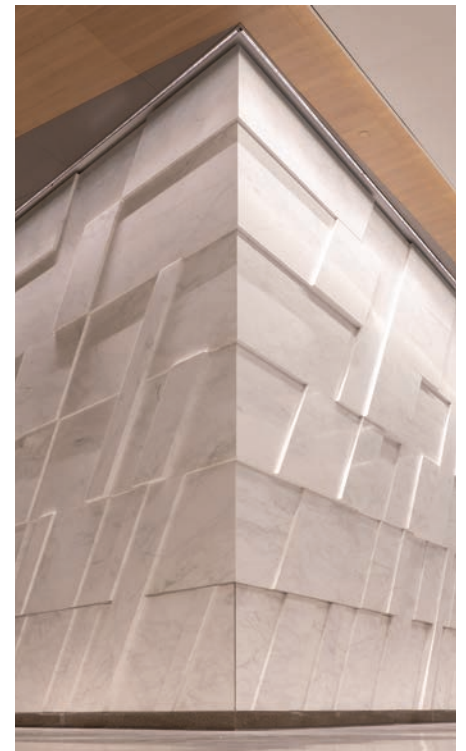
While coordination was required among all trades, the project ran smoothly in conjunction with General Contractor, Lend-Lease. The Jantile Specialties team, led by Pauric Curristin and Jennifer Coyne, completed six sky lobbies and over one hundred patient bathrooms and linen rooms. However, the most impressive work was installed in the main lobby showcasing a marble feature wall extending eighteen feet in height. The lobby also includes a twenty-foot long angular reception desk, two kiosk desks, a credenza, and a café. To create the hospital's architectural focal point, Jantile Specialties worked closely with the owner, New York Presbyterian, and architect, Perkins Eastman, to create a truly breathtaking entry. The feature wall consists of 106 custom made Calacatta Caldia panels assembled into six tiers, each partially cascading over the panel beneath it. Raw material was hand selected by the owner, architect, and Jantile personnel over multiple trips to Italian quarries.

Strategic fabrication and assembly were required, as all panels had mitered stone returns on every side to create depth and dimension. Each panel had its own individual clipping system of varying lengths which was integral to achieve this impressive design.

The stone installation was a puzzle assembly and had limited room for error. It was imperative that each individual panel be placed in the precise location, in order to successfully complete the overall effect. The wall's design intent presents a spectacular visual greeting to all who enter this building.

### Judges Comments:

An unequivocal winner for execution of design, fabrication, and installation. It's all honeycomb backed stone. In terms of sustainability and responsible use of material, this shows innovation. Impressed at how little material it took to achieve such a monumental appearance. Where have you ever been to a hospital where you've found something like this coming through the doors? Exceptional.







## Commercial Interior

# Saint Paul of the Cross Monastery Renovation Pittsburgh, Pennsylvania

Natural Stone Institute  
Member Company

**Rugo Stone**  

Lorton, Virginia

Stone Supplier/Fabricator/Installer

Other Project Team Members

**O'Brien & Keane Architects**  
Architect

Stone

Arabescato marble

Bianco Carrara C marble

Calacatta marble

Fior di Pesco Carnico marble

Nero Belgium marble

Rosso Francia marble

Rosso Levanto marble

Statuario Michelangelo marble



This 1850s monastery was in dire need of renovation. Rugo Stone's involvement began during the design process, traveling with the architect to Italy to select marble for the rear tabernacle, front altar, ambo, and two statue niches. Involving customary classical architecture, the project included extensive fine detailing for the molded profiles (both large and small pilasters), and hand-carved Corinthian capitals on the rear tabernacle, front altar, and ambo. The main marble color in Bianco Carrara combined with the lightly veined Arabescato marble pilasters is accented with bold elements of Rosso Francia marble to create a stunning effect.

Rugo Stone produced precise shop drawings and, with their engineer, designed the concrete and unit masonry details for the 28-foot, slender tabernacle element. Rugo Stone performed all masonry support, developed the rigging for setting capstones weighing more than 2,500 lbs., and integrated and supplied a new brass custom tabernacle enclosure.

The tabernacle features a hand-carved Christ on the Cross statue, modeled on the works of Pietro Tacca, a famous 16th-century artist from Carrara. Also adorning the tabernacle are two other custom-made statues, based on simple black and white images of Saints Gemma and Maria Goretti. The Rugo Stone team traveled to Italy to scan the wood statue of Saint Maria Goretti, using the dimensions to create a niche where she would eventually rest. The artist and architect collaborated extensively to recreate the facial image. The Saint Maria statue is unique in that her outreached arm is entirely solid to her torso – no pinning and epoxy were used.

Rugo Stone fabricated the center aisle marble in their studio. Comprised of a starburst pattern of rich-colored marbles, it complements the existing antique Tennessee marble floor of the side aisles. The completed look awed the client and Pittsburgh Passionist community, who praised the timely and professional work of the team.

### Judges Comments:

Attractive. Obviously, a challenging project. Everything is well done, from the stock selection, to the extreme craftsmanship, to the installation. Well executed care taken particularly with the selection of stone for the statues to provide the best outcomes. Despite the technology involved, the touch of the hand on the stone for finish work is really important.





## Public Landscapes/Parks/Memorials

# Houston Botanic Garden

## Houston, Texas



Natural Stone Institute  
Member Company

**Camarata  
Masonry Systems**   
Houston, Texas  
Stone Installer

### Other Project Team Members

#### West 8

Design Architect

**Clark Condon Associates**  
Project Architect

**Alamo Stone**   
Stone Supplier/Fabricator

#### Stone

**Calypso Coral limestone**

The 132-acre Houston Botanic Garden is an urban oasis located on an old municipal golf course in Houston, TX. The project is divided into four primary areas: the entrance, the pavilion, the alcove wall, and fountain.

The Calypso Coral stone's unique and rustic appearance on the 46-foot long walls at the entrance set the tone. The pavilion's stone cladding continues the natural outdoor appearance while serving as a welcome center for visitors. Without any doubt, the focal point of the project is the 470-foot long alcove wall with its 1" thick Calypso Coral stone cladding on one face, and split-face block on the opposite face. The stone cladding has an intricate recessed groove which interfaces with the specific location of 55 planter boxes that are built into the wall. The plant opening at the stone face is 2" tall by 15" long to cover the planter box in the masonry wall and allow ample room for the plant to "feed" down the face of the stone cladding.

The green wall portion of the Calypso Coral stone, when quarried, is located at the top of the natural ground surface. The proximity to the surface is what yields the unique finish with the characteristic sizable voids. This material was the critical component needed to achieve the desired appearance and function of the alcove wall fountain. The blocks were hand selected by the architect who took into account their size, location within the fountain, and surface area of the green wall finish.

As is often the case, being afforded the opportunity to see this material in person made the decision process much easier, as the team was confident with the final selection. The finished fountain offers a rustic, natural appearance with characteristic natural voids which are ideal for the placement of the plant life.

#### Judges Comments:

A love affair with that fountain wall. Appreciation for the use of the green wall material. Admire the care in the matching and the continuity of tone that they achieved in the alcove wall. First drawn visually and then realized that the process to achieve the visual they were looking for was likely harder than it might appear due to the material's heavy patterning. A great project.







## Public Landscapes/Parks/Memorials

# Reconstruction for Lawyers' Mall

## Annapolis, Maryland

Natural Stone Institute  
Member Company

**Rugo Stone**  

Lorton, Virginia

Stone Supplier/Fabricator/Installer

Other Project Team Members

**Ziger | Snead Architects**  
Architect

**Coldspring**    
Stone Quarry/Fabricator

Stone

Charcoal Black granite  
Mesabi Black granite  
Sierra White granite



The complete replacement and expansion of the large urban streetscape and a crossing located just in front of the Maryland State Capital in Annapolis, MD is still known as Lawyers' Mall. This prominent plaza is a gathering point for the legislators and attorneys working in the state capital. The focal point of the plaza is a salvaged and restored limestone colonnade element from a previous design as well as the bronze statue of the late US Supreme Court Justice, Thurgood Marshall.

Rugo Stone worked closely with a partnered supplier to design, fabricate and finally install over 10,000 sq. ft. of granite paving, steps, benches, and staircases to clad this streetscape. The granite pieces feature many custom finishes, which create a very uniform and bold appearance. The Indiana limestone colonnade and pedestal were carefully dismantled by Rugo Stone and transported to their marble shop for restoration. The stone was so heavily soiled that it required nearly two months of work that encompassed cleaning, patching, and dutchman repairs.

The bronze statue of Justice Marshall, original to the Mall, was temporarily on display at a remote state office building plaza. Rugo Stone's skilled rigging team dismantled the statue and relocated it to its original setting. The rigging and crane operations at the newly renovated Mall were challenging due to very tight tolerances and the weight of the statute.

The project had many challenges. Being in a historical part of the city, the narrow streets and proximity to historical buildings was challenging from a crane operations and deliveries standpoint. The COVID-19 pandemic as well as the weather had its own influence on the work of the crews and fellow trades on site. Despite all this, the Mall was dedicated as scheduled in December 2020.

This project is an excellent example of using and blending new granite into a historical urban streetscape.

### Judges Comments:

They nailed it. It's classical, historical, and well executed. The project is inviting with its mix of graphics and sculpture, and a careful and successful blend of new and reconditioned stone elements. The reconstruction aspect was a big challenge incorporating its bits and pieces and navigating tight neighborhood conditions.





## Renovation/Restoration

# Hall of State Exterior Remediations

## Dallas, Texas



Natural Stone Institute  
Member Company

**Dee Brown, Inc.**   
Richardson, Texas  
Stone Installer

### Other Project Team Members

**Gensler**  
Architect

**Phoenix 1 Restoration & Construction**  
General Contractor

**Continental Cut Stone**   
Stone Supplier

### Stone

Texas Cordova Cream limestone

Built within a shockingly quick nine-month period in 1936 for the Republic of Texas Centennial, the Hall of State is regarded as the premier display of Art Deco architecture in Texas. For over eighty years it has served to house historically significant artifacts and documents while being open to the public. Stone materials performed well during that time as the major façade element, but restoration efforts were needed.

Texas Cordova Cream limestone is the primary cladding, with secondary decorative elements of architectural wet-cast concrete. The buildings exposure to sunlight, moisture, and pollution differed greatly by elevation, which accordingly left varying levels of discoloration, mold growth, cracking, and spalling to be remediated. Through a series of early sample areas on the buildings north side, various cleaning products and methods were explored. These sample areas also served as a test bed for patching compounds, dutchman repairs, and for matching of mortar.

Work began, and a flow was established on the jobsite that allowed repairs and washdown to take place simultaneously, though on different wall areas. For the Cordova Cream replacements, existing pieces were carefully removed and measured to generate fabrication tickets. Where new architectural precast was required, the dismantled pieces were palletized and trucked to the fabricator. There the original pieces were used to create wood and rubber molds.

Over twelve months the masonry contractor expended 45,000 hours towards cleaning, patching, crack repairs, replacements, and re-pointing of the building's 95,000 square-feet of façade. This project proved to be an exercise in evaluating conditions and determining optimal approach. The exterior is now bright, consistent in appearance, ready for exposure to the elements, and renewed for decades of future service.

### Judges Comments:

The judges felt the restorers paid very close attention to identifying what parts to clean, what parts to restore and what parts to replace, in order, to preserve as much of the original stone fabric as possible. The stone repairs and cleaning were done expertly and the before and after photos were just great. They restored a lot of beautiful existing stone and maintained as much of the existing fabric that they could. That's the definition of restoration.







## Residential – Single Family

# Memories Surround Me Spokane, Washington

Natural Stone Institute  
Member Company

**Ancient Art of Stone**   
Cowichan Bay, BC Canada  
Stone Artist/Installer

### Other Project Team Members

**Nancy McKennon Architect**  
Architect

**Sunrise Inc.**  
Stone Supplier/On Site Crane

**Meadows Landscape**  
Stone Supplier

**Bedrock Natural Stone**  
Stone Supplier

### Stone

Polished basalt  
Sandstone blocks  
Glacial erratics  
Granite



Andreas and Naomi Kunert of Ancient Art of Stone created the stone artwork "Memories Surround Me." This unique, fully functioning natural stone fireplace created in their studio on Vancouver Island was delivered to the clients' new home 450 miles away in Spokane, Washington. The completed 22' tall commission was delivered in two pieces on Christmas Eve as an anniversary gift to the client's wife. The clients requested Kunert to design an artwork which captured the essence of their 50 years together and that filled the required space within the design of the great room while not overwhelming it. They wished the piece to represent their passion for fly fishing, their love of the movement and patterns in the waters, and the stones experienced, both large and small.

Kunert envisioned and proposed a scale drawing, suggesting the artwork rise from the "still waters" of polished basalt, with sandstone blocks on either side carved into shorelines, creating the desired secret caverns for their use. This cradles a lifetime of stories and adventures that rise into the all-encompassing Fibonacci sequence of life, a swirl of stones. A hybrid concrete substructure supported the tons of stone being secured to it and then moved. It was then enveloped in sandstone blocks which were carved, adding a granite mantle and glacial erratics, ascending into an astonishingly complex pattern of Sacred Geometry. Giving movement to the stone was intensely challenging, yet imperative in giving the piece a feeling of lightness and spiritual grace.

The final challenge was to lift the piece by crane from the low bed onto the foundation within the initial framing of the house, which was set within an exclusive residential neighborhood in sub-zero temperatures. Ancient Art of Stone was intimately involved in every aspect of the project. They designed the artwork, sourced the stone, created the commission in their studio, and delivered and oversaw the final installation into the client's home.

### Judges Comments:

An incredibly imaginative and unique concept. Extremely well done in its execution and implementation. Judges appreciated that the submission included the initial sketch. Being hand-chiseled instead of carved by a CNC machine is another unique aspect, compared to other sculptures we have seen recently. It defied categories, but in terms of the contribution to the residents, it really is remarkable.





## Residential – Single Family

# Private Residence - Vail

## Vail, Colorado



### Natural Stone Institute Member Company

**Gallegos** 

Vail, Colorado  
Stone Installer

### Other Project Team Members

**Berglund Architects** Architect

**Marble of the World**   
Stone Supplier

**Opustone** Stone Supplier 

**The Stone Collection**   
Stone Supplier

**Universal Tile** Stone Supplier

**Innovative Surfaces** Stone Supplier

### Stone

**Absolute Black granite**  
**Nero Argento granite**  
**Caffe Amaro marble**  
**Corteccia Grigio marble**  
**Calacatta Lugano marble**  
**Mystery White marble**  
**New Port St. Laurent marble**  
**Silver Wave marble**  
**Volakas marble**  
**Colorado Buff sandstone**  
**Slate ledger stone**  
**Aurora Blue quartzite**  
**Silver Grey quartzite**

More than five years after Gallegos first looked at preliminary drawings and provided budgets for a private residence in Vail, Colorado, the project is complete and is a stunning representation of modern architecture and masonry craftsmanship.

The owners desired their home to be appointed with hand selected, one-of-a-kind materials that would withstand the test of time. Meant to entertain guests as though they were at a five-star resort, the residence features a spa, massage rooms, glass pool and exquisite views of the Gore Range.

The contractor asked Gallegos to provide pricing and expert guidance on material selections and installation methods for the stucco, exterior stone veneer, and interior marbles, granites, and exotic stones. Their work is prevalent in all rooms and decks of this stunning residence.

The exterior stone veneer was sourced out of China, something Gallegos has done numerous times without issues. This time was different. About halfway through the exterior stone fabrication and installation, China closed the quarry, declaring that it was in a tourist region. This sent Gallegos scrambling, with forty percent of the exterior cladding installation complete and no budget to remove and replace the installed material. They were extremely lucky to find a similar material in Vietnam that was close enough in color and texture to blend in with the original material and not lose time.

The interior stones and other exterior and interior materials were primarily sourced through suppliers in Italy. The natural marbles and granites were installed in either a vein match or a book match pattern.

### Judges Comments:

Excellent implementation of modern architectural design using a broad variety of natural materials. The diamond matched walls, especially in the bathroom, were really nice. Overall, the installation was extremely well done, and for key features, the innovative virtual dry lay approach shown in drawings provided exceptional results.







## Residential – Single Family

# Willow Court Aspen, Colorado



Natural Stone Institute  
Member Company

**Gallegos**  

Vail, Colorado  
Stone Installer

### Other Project Team Members

**David Johnston Architects**  
Architect

**Colorado Stone Quarries**   
Stone Source 

**Antique European Flooring  
& Design Elements**

**Arkins Park Stone Company**

Telluride Stone

Stone Suppliers

### Stone

#### Veneer Blend

80% Adobe / 20% Highlands sandstone

**Absolute Black Zimbabwe granite**

**Calacatta Lincoln marble**

**Colonial Cream marble**

**Colonial Silver marble**

**Colorado Buff sandstone**

**Opal White marble**

**Petit Granit limestone**

**Statesboro limestone**



Gallegos was contacted by a client about a project where stone was not just to be an accent material, but the main visual and perceived structural element to create a timeless architectural composition. To further the endeavor: all veneers and dimension stone must be locally sourced and sustainably quarried. The design called for a moss rock veneer with cut stone trim. Sourcing the sandstone moss rock was simple because there were several local quarries to use. The problem was with the trim pieces.

Gallegos selected Colorado Buff sandstone for the trim since the buff body was a good contrast to the moss rock and it is a stone that can be cut to size. One main concern with any sedimentary stone is hitting what is known as a "dry" layer in the ledge. This is an area in the stone between sedimentary layers that has not solidified or cemented. It is still granular and can lead to future stone failure as water penetrates these layers and creates freeze/thaw issues. To avoid this, they used an epoxy injected into the dry layers to help solidify the material and prevent any future failures.

The client also wanted sustainable materials for their countertops and bathrooms. Many of the interior stones were either reclaimed materials or were sourced from Colorado quarries – Calacatta Lincoln was used extensively.

Gallegos sourced tiles from reclamation projects in Europe and Asia for use in the master bath and front entry areas. For many of the countertops, the owner's interior designer spent hours looking through remnants and applied several throughout the residence.

Willow Court is a spectacular and dramatic nod to stone masonry, something the owner, architect, and builder can be proud of and, for the most part, was built with the environment in mind.

### Judges Comments:

Oftentimes a residence with this much stonework can make you feel like you're sitting inside a mausoleum, but this doesn't do that. There's a lot of warmth in this. The stonework was done so well and involves so many complimentary colors and textures that move quite symbiotically through the massive structure. It's easy to look at. A beautiful design too.





## WOMEN IN STONE EMPOWERMENT SCHOLARSHIP

Three years ago, Andrea Carlson Claus was managing an Edible Arrangements franchise. She liked her job but was overworked, underpaid, and had run out of room for growth. She was ready for a change. She applied for jobs in many different industries that she felt would fit well with skills she had developed over the last 20+ years in the workforce, but was disheartened when after these interviews, the positions were offered to others.

She took an interview with Mont Surfaces, a wholesale slab distributor in Grand Rapids, MI, and was offered a position as a customer service specialist. Andi knew nothing about natural stone or the industry. She became intimidated by all of the information and thought she would never learn everything her manager and co-workers already knew.

A year later, with the beginning of the COVID-19 pandemic, the division's Senior Account Representative retired. Andi reached out to Mont's Vice President of Operations asking what it would take to earn that role. A few months later she was awarded the promotion and has



**Andrea Carlson Claus**  
Mont Surfaces

been a Senior Account Representative ever since. Andi was a bit surprised to start an "outside sales" position during a global pandemic.

Kurren Bafna, Business Development leader at the company's Cleveland headquarters, says that Andi's commitment to the team, customers, homeowners, and associates has been instrumental in driving overall sales, providing high quality customer service, and preserving the Mont brand.

Sales Manager Laura Szymanski recalls that over their years working together she has never held back on giving Andi new challenges and opportunities to grow and sees Andi as one of a new generation of leaders in this industry.

Andi has since joined many local professional associations and has participated in the Women in Stone Mentorship Program. She is committed to furthering her career and gathering as much education as she can.

Congratulations to Andi Claus, recipient of a 2021 Women in Stone Empowerment Scholarship.

## WOMEN IN STONE EMPOWERMENT SCHOLARSHIP

Five years ago, Kristin Cannon could not have predicted where she would be today, but after starting a job at Continental Cut Stone, she now knows where her career is headed.

For the past 3 years Kristin has assumed the role of Project Coordinator at Continental Cut Stone, although she jokingly says the title doesn't even encompass half of what she does. She dove headfirst into learning everything she could about their company products, about limestone in general, and about project management from a supplier's standpoint. She believes that enthusiasm has propelled her into what she is today. In her words: "I try very hard to be a source of knowledge and information for our customers so I can make sure they are happy with their product and know more than when they walked in our offices." She has a proven thirst for knowledge and is eager to learn what she can do to be more valuable to the customer and to the company.

Part of her broadening knowledge came from the 18-month journey into sustainability through the work she



**Kristin Cannon**  
Continental Cut Stone



did to help Continental Cut Stone earn certification to the Natural Stone Sustainability Standard (ANSI 373). That was a long road including having to juggle her work on the certification process with her regular work responsibilities, but the effort has been rewarding. Proudly, Continental Cut Stone is now a silver certified fabricator and gold certified quarrier of their Cordova limestone. Kristin plans to tackle certification for their Lueders limestone quarry next.

Kristin credits her employers for giving her access to connections, mentors, and time to learn new things. Katherine Teel runs Continental Cut Stone with her husband Rob and says: "Kristin is a great example of how women are moving up in the industry. Exposure to like-minded people in the industry through shadowing, going to industry events and education will frame up her next steps to grow."

Congratulations to Kristin Cannon, recipient of a 2021 Women in Stone Empowerment Scholarship.

Thank You to Our Sponsor  
**NATURAL STONE**  
— FOUNDATION —





## Natural Stone Scholarship

Noe began his natural stone journey in 2016 at the age of 25 as a Safety Material Handler with Quality Marble & Granite. He became fascinated with the industry. Soon enough clients were calling Noe directly, asking him for advice on what stones they should recommend to their clients. Through intense research and his love for design, Noe began helping clients recommend the best stone option for their customer's lifestyles.

Evan Cohen, president of the company, admits that Noe's career didn't start out with great promise. "He was young, inexperienced, immature, and I really didn't see a future for him in our company." One day, everything clicked for him. He started taking control of his role and his passion set it. He was promoted to sales, where Cohen admired his enthusiasm for design and customer service and took him under his wing.

With his combined experience in the warehouse and hearing all the challenges their clients were having, Noe was able to implement different tactics that immediately boosted customer service and enhanced the experience of the clients. Positive reviews of the company went up and Noe earned employee of the year 3 years in a row.



**Noe Cortez**  
Quality Marble & Granite

In 2017 when highly marketed engineered quartz products saw an increased demand by their customers, Noe got proactive, brought the whole team together, and began busting myths the quartz industry was marketing to homeowners. By understanding the behavior behind the success engineered quartz was having, and through customer relationships, Noe suggested the company bring in more quartzites. They brought in more natural stone without losing sales to the engineered quartz hype. Management decided to promote Noe again, who is now Customer Solution Manager.

In his current position, Noe is on the road and is the bridge between what the company does and what their customers need them to do. What does he see as his future? "I plan to follow and promote the principles our company has built and that is by providing creative solutions and memorable experiences through honest partnerships."

Congratulations to Noe Cortez, recipient of the 2021 Natural Stone Scholarship.

Thank You to Our Sponsors

**NATURAL STONE**  
— FOUNDATION —



**COLDSPRING™**

# NEW DEADLINE!

## *Call for Entries*

Submit your Pinnacle Award entries and  
Industry Recognition Award nominations!

**MAY 20, 2022**

For more information, visit  
[www.naturalstoneinstitute.org/awards](http://www.naturalstoneinstitute.org/awards)





Monica Gawet, president of Tennessee Marble Company describes John Cierech as a craftsman, artist, hand-finisher, and advocate of our industry, which makes him deserving of the Craftsman of the Year award.

John was 30 years old when he began his career in the stone industry. After serving in the military, he spent a short time in electronics before accepting his first full-time work with stone at Gawet Marble and Granite in Vermont. Gawet had just acquired some accounts from Vermont Marble Company after they closed their doors. He explained: "There was a huge demand for craftsmen to service these accounts. And, fortunately for me, there were a number of skilled craftsmen in the area, who would circulate through the company and I was able to pick up on their skills to develop my own."

John would spend the next 32 years honing his stone skills, passion, and craft, eventually advancing to more detailed work, including V-sunk lettering and intricate carving, especially on memorials. He attributes his interest in this work to an appreciation of the stone carving history of the area's memorial art. His favorite work was done on the old headstones of New England, especially the artwork that was done on the gray stones: "I think it started with a religious outfit that wasn't permitted to draw on paper any kind of artwork, but they could carve it on headstones. A lot of the carvers would develop their own and would just pass it down."

John also enjoyed making residential granite and marble countertops, putting them into homes and getting good satisfaction from how the customers reacted, including their realization of what it did for their home.

In 2011 John left Vermont for the warmer climate of the South, and through his work at Cutting Edge Stone in Alpharetta, GA, gained experience in limestone carving for Old World style residential projects. There he honed his ability to create his own designs and layouts, sometimes based on pictures, and other times just from someone's verbal description. He soon brought that experience back to the Gawet family.

"I feel so fortunate that John reconnected with us at our factory in Tennessee," Monica Gawet remarked. "To remember him when he first started his career working with my father in Vermont, and then to work with him 40 years later at Tennessee Marble was very special for us as a family."



**John Cierech**  
Tennessee  
Marble Company



At Tennessee Marble Company, John began working on projects together with other craftsmen from different departments, collaborating and applying individual skills from start to finish. This approach created a huge interest in the project itself because all departments got to see what needed to be done and how the craftsmen in each department went about their work, sharing this sense of concern for all efforts from the beginning to the end of the project. It created a cohesive workforce and positive impact.

John explained further how working with apprentices enriched his work experience. "Just to have these young people come in to learn the skills and develop their own skills. It's very rewarding to a company and the industry," he said. "I personally enjoyed watching apprentices develop their own style and method of carving techniques. And it was rewarding for me to just work alongside someone that possessed the confidence and interest in developing this skill in the craft."

Emma Levitz was an apprentice at Tennessee Marble under John's mentoring who is grateful to have had the opportunity to work with him. She expressed that while she had experience in carving stone, she had no experience in architectural carving, but John was an excellent teacher. "It was helpful to just watch him work," Emma said. "John always made stone carving look easy and natural, even when doing challenging work. He is truly a master of his craft."

Phillip Gibbs apprenticed with John for a year and remarked that "he exemplifies the character needed to be a true stone craftsman, and the natural ability to see something beautiful and bring it to life out of solid stone."

Colleague Ryan Cole agreed, saying: "John has a way to see a carved piece inside a solid block, and most times, he could carve pieces faster than I could program them on the CNC."

When asked what receiving this award meant to him, John replied: "it means a great deal to me. Knowing that there's a huge interest in the work that an individual does in the industry is a great incentive for the craftsmen to strive to achieve their finest work."

Congratulations to John Cierech, the 2021 Craftsman of the Year.

*"John, thank you for your steadfast attention to detail. Your calm demeanor and willingness to tackle any project benefits the natural stone industry and the architectural built environment. Congratulations from all of us."*

Monica Gawet, Tennessee Marble Company

*"It's a great honor for you and it's well deserved. Thank you so much for everything that you've taught me."*

Phillip Gibbs, Tennessee Marble Company

Thank You to Our Sponsor



**POLYCOR**





## WOMEN IN STONE PIONEER AWARD



In her nomination letter for the Women in Stone Pioneer Award, Barbara Cohen shared that Kim Dumais has spent her entire career in the stone business. 22 of those years have been with Miller Druck Specialty Contracting.

During those years, Kim has become an authority on stones around the world and earned a status with architects and clients making her an asset to anything involving stone.

While Miller Druck doesn't typically believe in titles, Kim is recognized as Vice President of Sales. Her colleague Ismael Garcia believes a more accurate title would be Director of Knowledge because of her thirst to teach, encourage, and help others advance.

"Kim is a role model for other women interested in a career path in natural stone," says Jonathan Mitnick of CCS Stone of Moonachie, NJ. "She has decades of experience, feels equally comfortable working with luxury clients, interior designers, and architects as she would be at a jobsite in Manhattan, working with a difficult project manager."

Respected by colleagues, clients, and peers, Kim's stone knowledge, professionalism, and passion to teach is clearly evident.

"Daily, she helps motivate not only me, but our entire team," adds Ismael Garcia. "Her tireless efforts to push our industry forward are inspiring. From educating everyone about stone, to always finding innovative ways to interact with clients, Kim's career is quite admirable."

Eliana Bahamon, another colleague at Miller Druck, says that crossing paths with Kim 16 years ago was like winning the lottery. Kim guided her steps in developing attributes of versatility and creativity, lending increased value and credibility to her opinions on layout and design questions.

When Women in Stone was first formed, Kim didn't waste any time getting involved and joining the steering committee. She has played an active role since its inception and works to give other women the tools that they needed to pursue a successful career in the stone



**Kim Dumais**  
Miller Druck  
Specialty Contracting



industry. Women in Stone Administrator Sarah Gregg compliments Kim for her contributions to the organization's Mentorship Program. "The most impactful thing that I've seen Kim do is mentor the young women in our industry. We assign her with a mentee who maybe has only one or two years of experience in the industry, who shows great promise, but just needs that extra education about where the stone comes from and what its best uses are."

Nadia Grogan of Capital Conservation Services of Ottawa was mentored by Kim and was initially struck by her knowledge and passion for stone. She is grateful for helping her flourish and grow in the industry. "I met her at a time when I worked almost exclusively with men. Now I manage a team of mostly women. I hope that I can offer them support and inspire their confidence like Kim did for me."

Ismael Garcia also credits Kim for her inspiration and guidance during a summer job more than two decades ago when he was hired to be her assistant. "The position was temporary and not much was expected of me. After two months, thanks to Kim, I was able to absorb enough knowledge to be invited back, and later promoted to a full-time salesperson. With Kim's guidance for the past 22 years, we turned a summer job into a passion for stone that turned into a career."

Paula Vigo has worked with Kim for 6 years now. She recalls interviewing with Kim who then taught her practically everything and encouraged her to study and get certified to give face-to-face CEU and online courses for architects in New York City, which meant pushing beyond her comfort zone. Paula is grateful for this nurturing but also appreciates the support Kim provided her and others during recent difficult times. "In the time of this pandemic, where you tried to find opportunities to meet, create virtual meetings so we can be with each other. And you will check on us and see how we were doing. So, thank you. So very grateful. You deserve it all."

Congratulations to Kim Dumais, the 2022 Women in Stone Pioneer.

*"We have travelled together, weathered sunshine and storms with architects, clients and suppliers and have made a good team and great projects together. No one has a keener eye and understanding than you. Thank you for all the years."*

Barbara Cohen, Miller Druck Specialty Contracting

*"She's been my mentor this past year, which has been fantastic. She's made a huge impression on me and how I see myself growing in the industry."*

Analisa Fraga, PICCO Group

Thank You to Our Sponsors











# Person of the Year

The Person of the Year award is presented annually to an individual who has provided extensive support to the association's executive team during the year. As a dedicated leader and tireless volunteer, Michael Picco of PICCO Group is recognized as the 2021 Person of the Year.

Michael served as the 2021 Natural Stone Institute board president, guiding the association through the second year impacted by the COVID-19 pandemic.

Natural Stone Institute CEO Jim Hieb explains why Michael was this year's choice. "It was remarkable to watch how he got involved and how he was engaged. There were committee meetings upon committee meetings that were conducted via virtual platforms, and he was the pillar of participation, contribution, and leadership. He was a tremendous influence on me and our staff this year." Hieb described Michael's leadership style as concise, direct, strategic, and spot on.

Picco's association contributions in 2021 include much more than serving as the board president. Michael championed the industry's sustainability initiative, helping give the Natural Stone Sustainability Standard relevance in the marketplace and positioning natural stone as a sustainable building material for the design community. He has the unique ability to simplify complex issues and his ability to rally people around a concept is impressive. Specific to sustainability he shared the message that this initiative is the "path to the future."

He added, "Sustainability is important to the design community and the natural stone industry has a big opportunity to leverage natural stone as the premier sustainable building product. We needed to seize this moment."



**Michael Picco**  
PICCO Group

His long list of 2021 industry involvement also includes serving as a key contributor to the planned update of the Dimension Stone Design Manual, assisting in the development and launch of the "Achieving Green Building Goals with Natural Stone" CEU course, and leading the strategic effort to develop Environmental Product Declarations (EPDs) for cladding, flooring/paving, and countertops.

When asked to reflect on his year of volunteer leadership, he responded: "I'm very proud of the multifaceted initiatives that we've taken on at the same time — the ISO project, the Natural Stone Sustainability Standard, and updating the Dimension Stone Design Manual. We're all really focused around the sustainability initiative and some of the pieces we need to put in place around that. I'm proud of being part of that process and we'll continue to help in the future to drive that forward."

Picco also guided the association through a merger with the National Building Granite Quarriers Association, served as an advocate for the Natural Stone Pavilion at StonExpo/Marmomac at TISE, and gave multiple presentations highlighting the global role and initiatives led by the Natural Stone Institute.

In his own words, Michael described what it was like serving during the pandemic. "Despite the challenges we had this year with restricted travel, connecting through webinars (as much as I don't like them) was the only way to do it. Whatever it took (phone calls, zoom meetings, go-to-meetings), I felt a commitment that I needed to do it for the industry."

Congratulations to Michael Picco, our 2021 Person of the Year.

*"I can't stress enough the importance of his leadership on the sustainability initiative. We would not have accomplished all the things we were able to accomplish in 2021 without him."*

Sarah Gregg, Natural Stone Institute

*"Mike is a great asset to the natural stone industry."*

Robert Zavango, Cleveland Marble Mosaic  
2020 Natural Stone Institute Board President





*"What I saw immediately in Brett was his tireless energy and his eagerness to learn. The potential that I saw in Brett was that he paid attention to detail."*

Kenneth Castellucci

*"My first impression was why such a young man was receiving an award for his lifetime achievement. I hope they're not complete. But I was surprised, but not surprised. He's obviously been contributing to the industry for a long time."*

Mark Savelloni, Rugo Stone

*"Brett has been at this a long time. And every job that I have worked on with Brett or everyone I've talked to where Brett has been involved, it has always been about the perfection, and the quality of the installation, along with demand for high quality materials."*

Dan Rea, Coldspring






## Migliore

AWARD FOR

### Lifetime Achievement

In his letter nominating Brett Rugo, Tony Malisani said that Brett has been and continues to be a champion for both the Natural Stone Institute and our industry around the world. "His passion for natural stone, as well as the incredible body of work he has completed, were the two motivating factors in nominating Brett Rugo for the 2021 Migliore Lifetime Achievement Award."

One typically expects a lifetime achievement award to be given to someone much older, but a recognition of Brett's career success and impeccable reputation to date almost seems overdue.

Roberto Canali of Euromarble in Italy met Brett for the first time in 1981 and has worked closely with him since. In that time, Canali has recognized Brett's unique and immense love for marble. He joked: "We started out as two young marble men in training, and now he became a professor! So, he's something important."

Vito Germinario, of LGV Group, LLC., another long-time business associate and friend, recalled that one of the things that impressed him about Brett was his meticulousness and his desire to do things right the first time.

His immense passion for stone was an essential element in Brett's motivation to help create the Craftsman of the Year award in 2009. This award was designed to celebrate the hands, the minds, the skill, and the craft that forms the beautiful works of art from the blocks and slabs that we get from the quarries.

Born in Barre, Vermont, the grandson of an Italian stone carver, Brett knew early in his life that he was meant to work with one of nature's most majestic and timeless materials. When asked about some of the key influences in his life, Brett began with his parents. "I was raised by really fine people with tremendous work ethic. They taught me right from wrong and they taught me hard work and diligence and dedication, in spite of all the obstacles."

His most meaningful employment in stone began in the early 80s with Kenneth Castellucci, who Brett credits for being instrumental in terms of building his own network, his own awareness of all the different sources and players within the industry. "You know, he didn't hand me a textbook, but he certainly opened doors and I will be eternally grateful for that."

In 1997, Brett struck out on his own with deep knowledge and vast experience. He quickly earned a reputation as a "can-do" contractor with an ability to handle the most complex projects and became an expert in the industry.

Always seeking knowledge or an opportunity to share, Rugo Stone became a member of the Marble Institute of America in 2000. Brett's individual industry association accomplishments began with his appointment to the Board of Directors in 2004. He ultimately became president in 2010. Here he pushed forward an agenda emphasizing the development of new cutting-edge topics and updating the existing



**Brett Rugo**  
Rugo Stone



chapters of the *Dimension Stone Design Manual* to keep the industry up to date with changes in construction techniques and building codes.

Brett can also be credited for initiating the development of the association's Accreditation program. Long-time Rugo Stone employee Sam Arcot tells us that Brett has always believed the industry should be standardized, and the Accreditation credentialing program was an excellent opportunity to achieve those standards and to create a benchmark for companies to achieve. It's not surprising that Rugo Stone became the first accredited Commercial A contractor and natural stone fabricator.

Brett and his team at Rugo Stone have together earned an impressive 22 Pinnacle Awards and 4 Tucker Design Awards over the life of these awards programs. Dozens of other organizational accolades have recognized his knowledge, skill, creative problem solving, and dedication to the highest quality in standards. He credits those to his team—not just himself.

Early on Brett realized that he was a good captain, but that you need to have all star players on your team, and you have to have people who are willing to take direction and use their skills, which he claims were often better than his in individual disciplines. Rugo Stone has assembled a team that works together and is committed to the highest level of quality, which has always been the standard that he has wanted for his company. He's very proud of that.

On an individual basis, Brett recalls one of his personal highpoints. "Winning the Benemerenti Medal from Pope Francis for our work at the Trinity Dome was an unbelievable moment as a Catholic receiving an award of service for all the years of dedication and quality that I've put into the work that we do within the Catholic Church."

After winning the prestigious Migliore Award, what could be next for Brett Rugo? Colleagues believe he will continue to look for more challenging projects for his company, as he always has. Mark Savelloni adds that "he's a man willing to take risk and it shows in the work that he produces."

Brett anticipates working to continually advance the technical documents and documentation that the Natural Stone Institute offers to the industry. He plans to continue educating specifiers and young architects on how to properly use natural stone. He believes it is the key to our industry's survival.

Brett also encourages members who are passionate about this industry to be forthcoming and share their knowledge and experience with young people so that the same levels of standards, the same usage, continues for the next generation. "Inspiring young people that do have the passion for the stone industry I think is part of our own obligation as leaders."

Thank you, Brett. Congratulations on receiving the 2021 Migliore Award for Lifetime Achievement.

Thank You to Our Sponsors



CLEVELAND MARBLE MOSAIC COMPANY



COLUMBIA STONE  
INCORPORATED





# NATURAL STONE

## — FOUNDATION —



### NATURAL STONE FOUNDATION LEADERSHIP SOCIETY

The Natural Stone Foundation Leadership Society is comprised of the leaders and believers who are investing in the future of our industry.

#### DIAMOND • \$100,000+

Camarata Masonry Systems, Ltd.\* Dee Brown, Inc.\* MSI Charitable Trust\* Gary Mullard\*  
Natural Stone Institute Annual Auction\* Triton Stone Group of New Orleans\*

#### PLATINUM • \$50,000-\$99,999

Antolini\* Genesee Cut Stone & Marble Co.\*

#### GOLD • \$20,000-\$49,999

Arizona Tile\* BG Hoadley Quarries & Patsy Fell-Barker\*\*† Miles Supply\*

#### \$1,000-\$19,999

Artistic Tile**†	Lyons Sandstone	Jack Seiders†
Kent Barnow	Malisani, Inc.	TexaStone Quarries
Coldspring	Tony & Karen Malisani†	Tomkins Bluestone Co., Inc.
Cutting Edge Countertops, Inc.	Ralph Morgan	US Stone Industries†
Joe Dellacroce	Duane Naquin**†	Valley View Granite†
Halbert Mill Company	Ontra Stone Concepts†	VM Kaldorf
Jim & Christa Hieb**†	Michael Picco	Leon & Hanna Zanger Foundation
Brian & Wendy Kornet**†	Quality Marble & Granite	Robert Zavagno
Josh Levinson**†		

#### FRIENDS • \$999 and under

Amazon Smile Fundraiser	Mariavittoria Grassi	Northern Stone Supply
Anonymous†	Doug & Pam Hammond*	Park Industries, Inc.
Sam Arcot	Aaron Hicken	Jeff Pavic
Jane Bennett	Egon & Becky Hinss	PICCO Engineering
Oscar E. Bolivar BSIE, MBA	Claudia Jaskulski	Michael Schumacher†
Bonstone Materials†	Rich Katzmman	Kathy Spanier
Brachot Belgium	Lynn Kovach	TexaCon Cut Stone
CCS Stone, Inc.†	LATICRETE International	Michele Valentino-Skezas
Brenda Edwards†	John Malysenko	Susan Van Etten
Endless Mountain Stone Co.†	Cari May	WF Meyers Co., Inc.
Monica Gawet†	Susan Myers†	Dacia Woodworth
Marcette Gordon	Natural Stone Consulting Group LLC	Xiamen R+M International Stone

## Thank You for Making a REAL Difference!

\* Denotes a multi-year commitment. | † Denotes "in honor of" or "in memory of". | List current as of December 17, 2021.  
Please visit the website for a complete list of tributes.

[www.naturalstoneinstitute.org/foundation](http://www.naturalstoneinstitute.org/foundation)