

2019 Tucker Awards

Project Name: An American House

Project Statement:

This American Country House is located on a prominent street in the western Chicago suburb of Hinsdale, IL. The main home, wing, and accessory building are sited to make the best use of a compact site. Several beautiful old trees were preserved on site to form the focal point of the backyard. A carved stone fountain, gardens, a pool with an intricate glass mosaic tile pattern, and an accompanying pool pavilion serve as a lovely setting for large scale outdoor entertaining with family and friends.

The load bearing masonry walls are a combination of cut stone and field dressed rubble stone. The cut sandstone trim was supplied in block form from an Ohio quarry and was all cut and carved in a cut stone shop on the South Side of Chicago. The rubble stone walls are a custom selected blend of Pennsylvania field stone supplied by a quarry in northern Pennsylvania. The substantial corner quoins were reclaimed from an old stone wall formed of large hand-hewn blocks. All the stone walls batter in slightly from top to bottom, which required the mason to very carefully sort and then field dress each stone as it was installed. Tool marks from the dressing operation clearly show in the photographs.

A large family of custom-built wood windows and doors are oversized to flood the house with light and create a sense of transparency between the house and the surrounding gardens. This connection to the landscape is strengthened through a number of stone and timber porches, in particular, a dramatic cut stone loggia overlooking the backyard. Each of these porches are paved with intricate patterns of cut sandstone and cut roofing slates.

A graduated slate roof of semi weathering grey green slates quarried in Vermont begins with inch thick slates at the lowest eave. A gentle verge at each raking edge and a copper ridge cap add to both the beauty and the durability of the roof. Roofs with a gentler pitch are executed in both batten seam and standing seam copper. A variety of dormers give life to the roof and provide for light filled upper story rooms. The home is crowned with a detailed copper clad lantern and a number of imposing chimneys built from custom made water struck bricks.

The owners of the home also commissioned a program of carved stone iconography to add further beauty and meaning to the project. These remarkable carvings, which include a starburst fountainhead, a pair of oval windows adorned with oak leaf garlands, an oak tree carved into the keystone above the front entrance, and carvings of a boar's head, an owl, a sheaf of wheat, and a stag's head for each of the major gables, were executed by a local stone carver.

Latevior stone was purchased directly from the quarry in Carrara and from wholesale supplies in that town. The stone for the kitchen was sourced from a single large block. Cutting diagrams were supplied to the fabricator and all components were finished at a local shop. Slabs purchased in Italy were water jet cut in Iowa, installed in Hinsdale and then honed in place for a uniform low sheen. Each piece of stone was carefully selected by the project architect for a specific location and cutting instructions were conveyed using AutoCAD/Photoshop design. The pool deck and interiors of the pool are clad in limestone quarried in Egypt with a lush hammered finish provided by a fabricator from Atlanta, Georgia. The paving is cool underfoot during those months where the Chicago climate makes spending time by the pool pleasant and the hand made finish is elegant and safe.















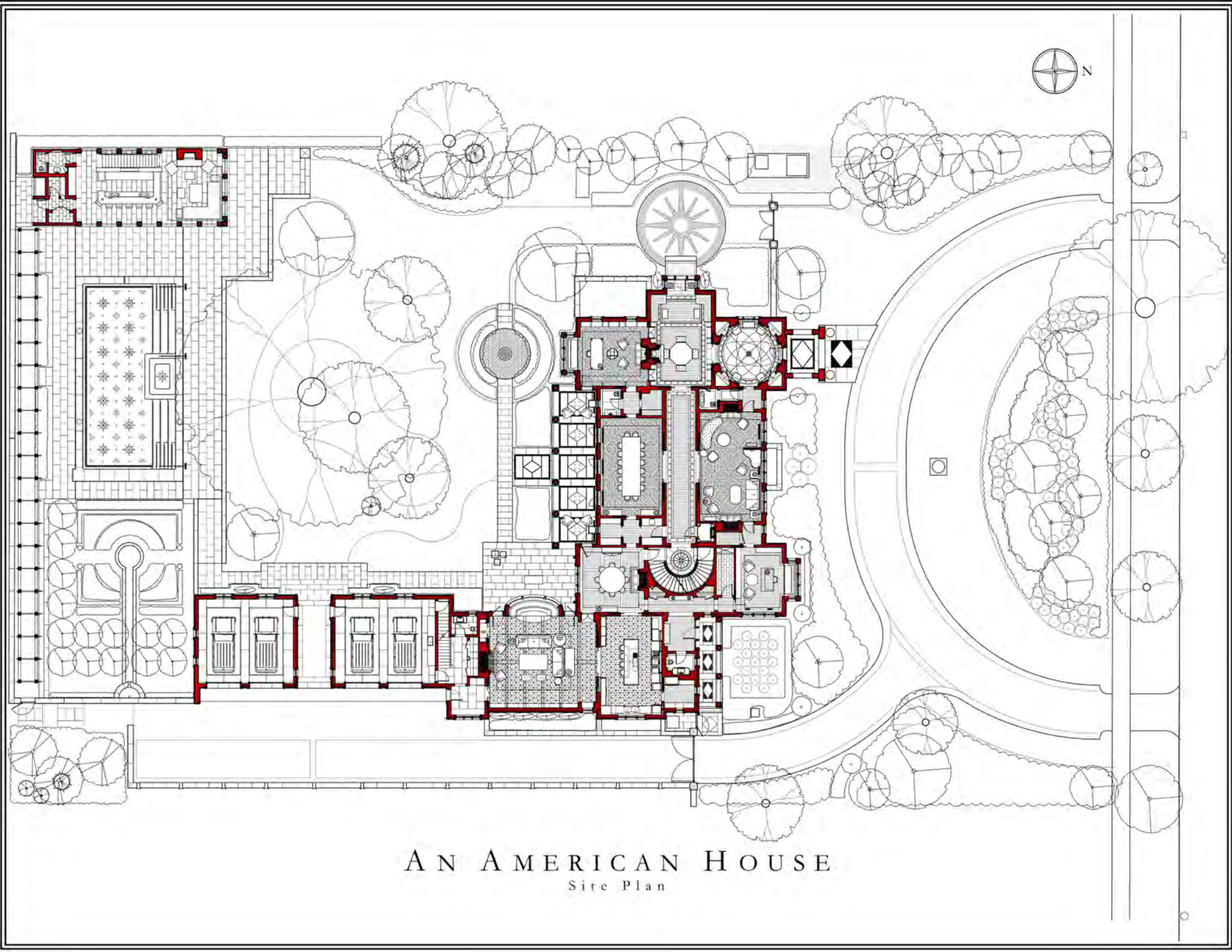












AN AMERICAN HOUSE
Site Plan



North Elevation



East Elevation

AN AMERICAN HOUSE

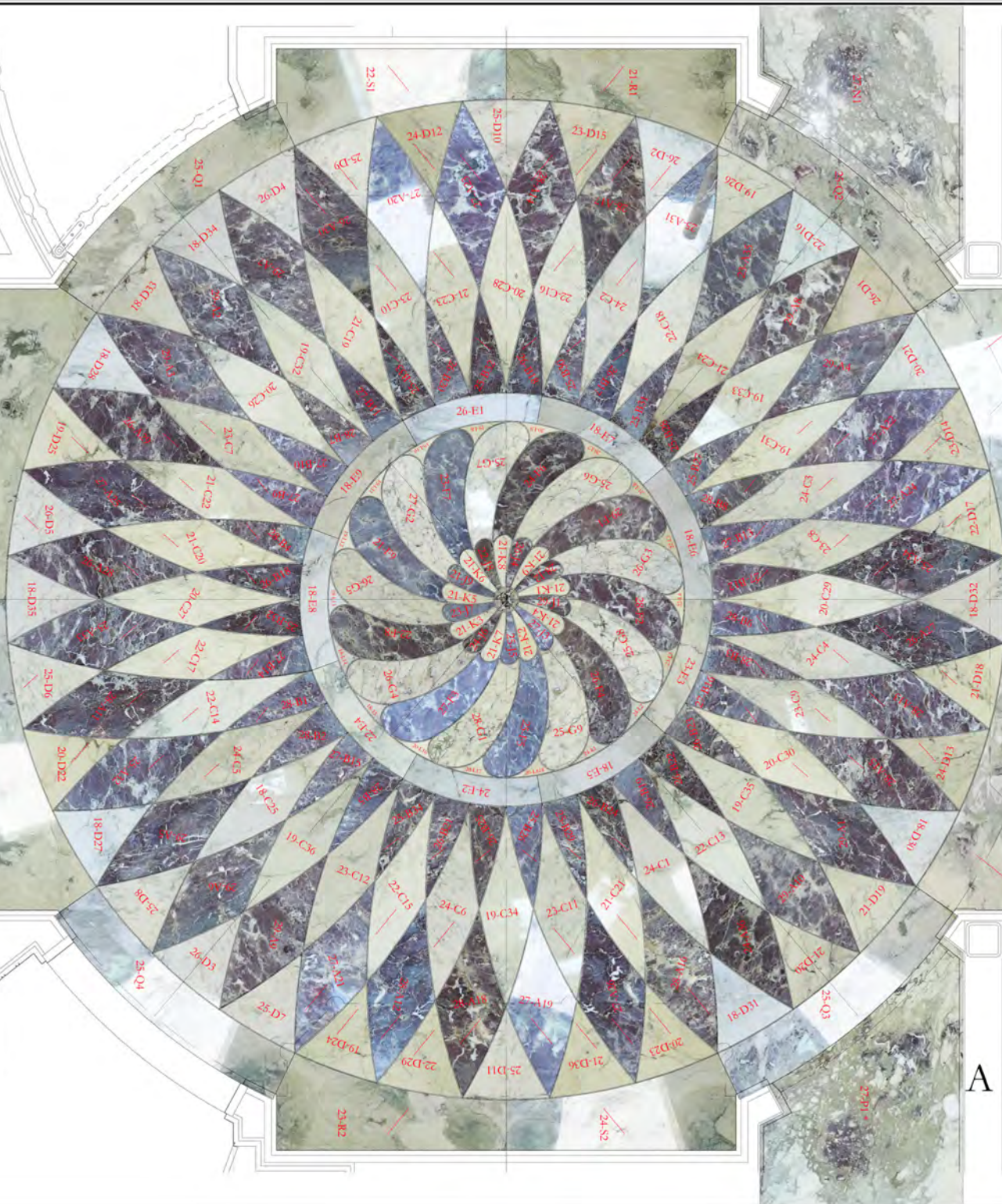


South Elevation

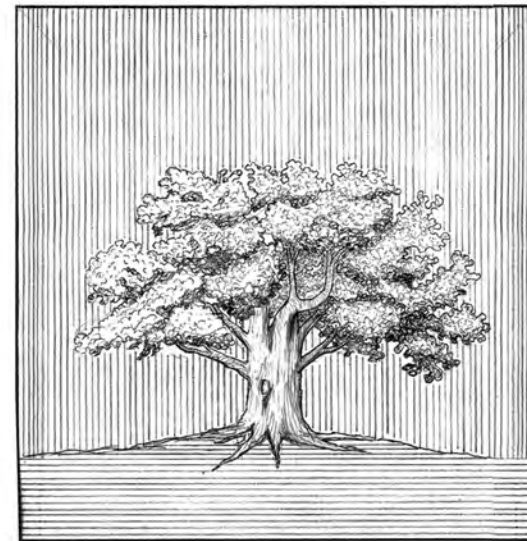


West Elevation

AN AMERICAN HOUSE



AN
AMERICAN HOUSE
Floor Cutting Diagram



AN AMERICAN HOUSE
Oval Surround Carving & Oak Tree Keystone